

Installation Guide

Installing SigCaptureWeb Chrome Extension Using Windows Group Policy Object (GPO)

Version 1.0

Copyright © 2017 ePadLink. All rights reserved.

Table of Contents

1.0 – Introduction	3
2.0 – Prerequisites	3
3.0 – Procedure	4
3.1 – Adding a New GPO	4
3.2 – Editing the Group Policy	6
3.3 – Configuration	13

1.0 – Introduction

Chrome extensions are normally downloaded and installed directly from the Chrome Web Store. This document is intended for system administrators planning to force-install the SigCaptureWeb SDK Chrome extensions remotely from a Windows domain server to the Windows client machines having the Chrome browser installed. The Installation procedure leverages Windows Group Policy Object (GPO).

2.0 – Prerequisites

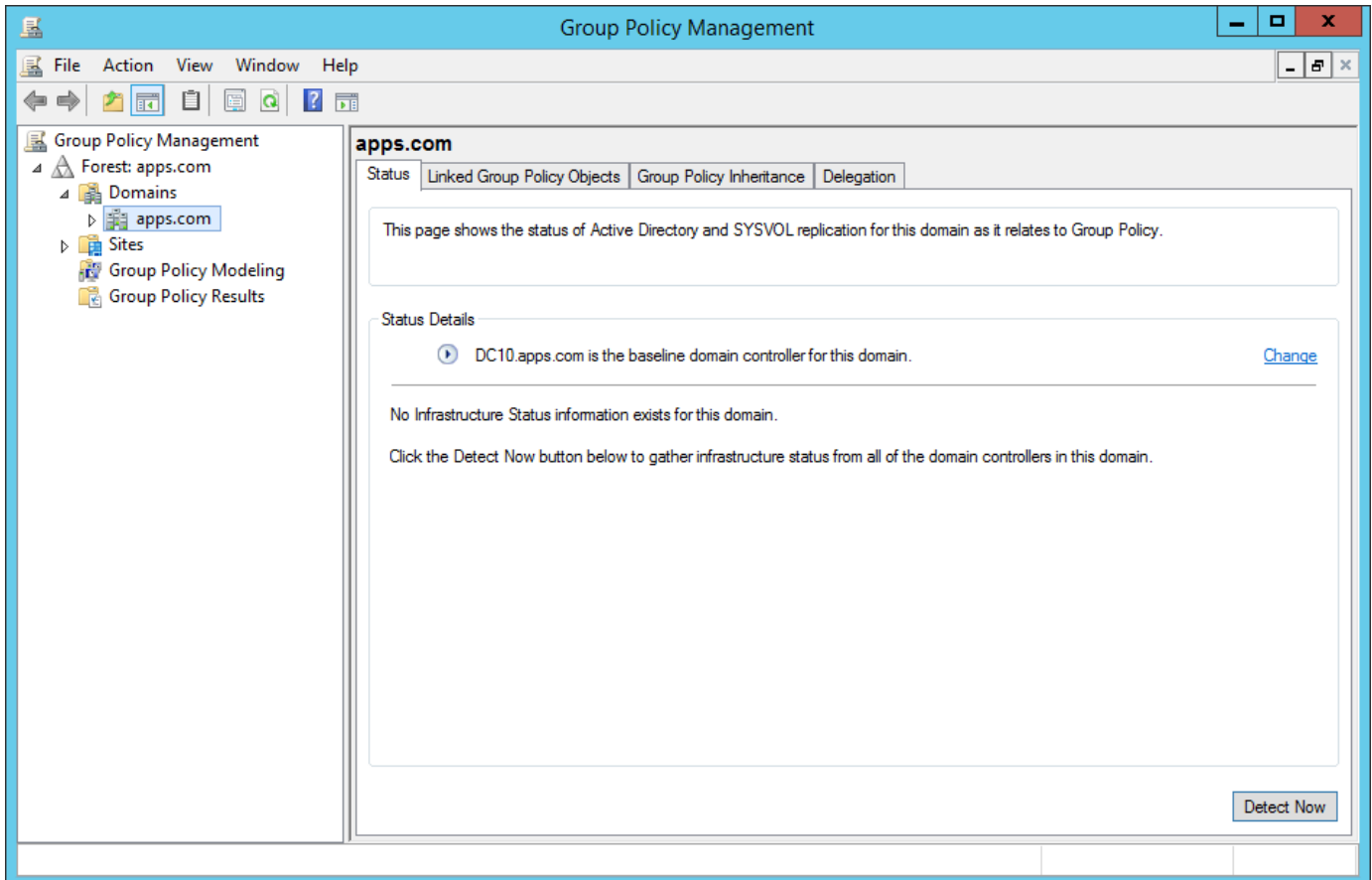
- Windows Server 2003 or higher with Domain Controller and all the Windows clients should be connected to the domain.
- Policy templates. There are two types of templates available to install the Chrome Extension, ADM and ADMX templates. Google provides options for an ADM file (Windows 2003 Server) and an ADMX file (Windows 2008 Server). Download the “policy template” zip file from the below URL depending on your server version.

<https://www.chromium.org/administrators/policy-templates>

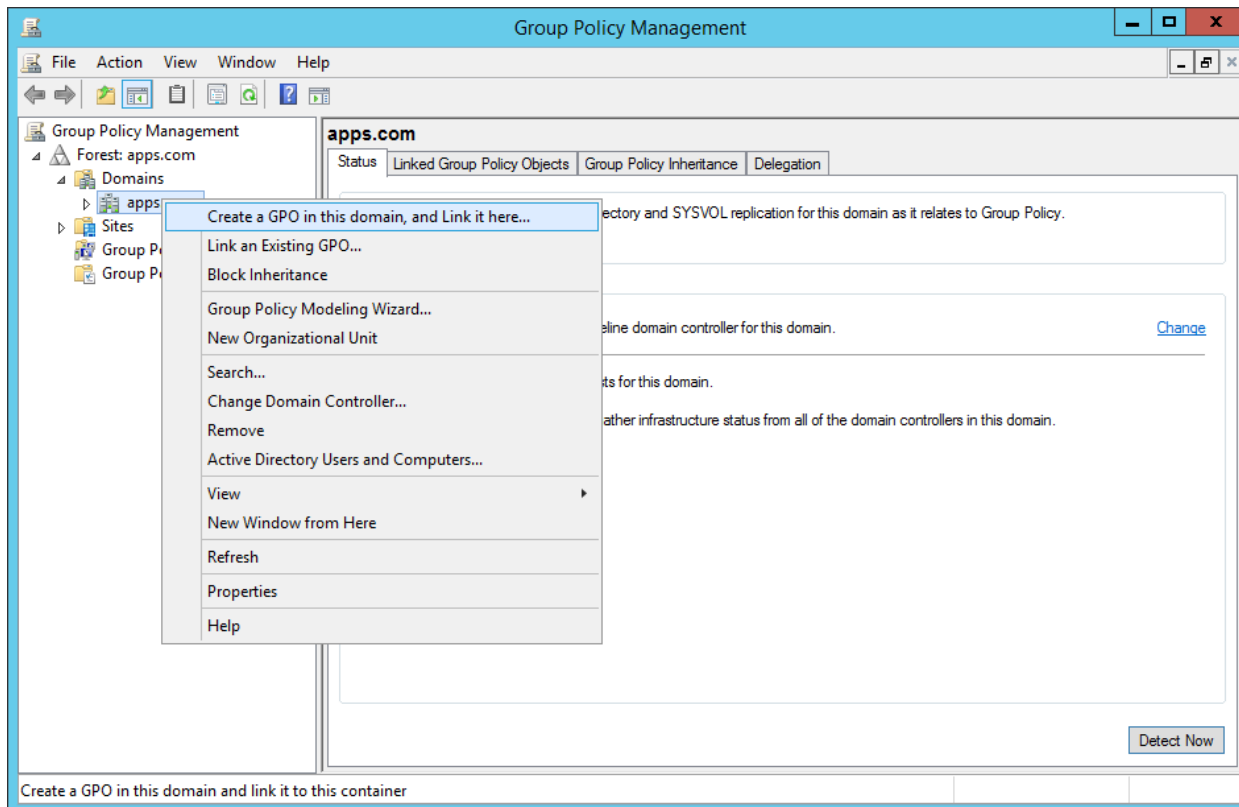
3.0 – Procedure

3.1 – Adding a New GPO

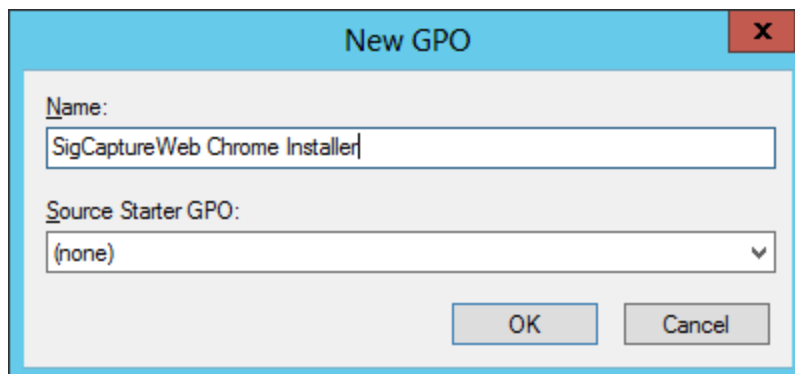
- Open “Group Policy Management” in the Windows server
 - Open Run (Windows + R) option.
 - Type gpmc.msc and press the Enter key.



- Right click on the listed domain under “Domains” and select “Create a GPO in this domain, and Link it here...”



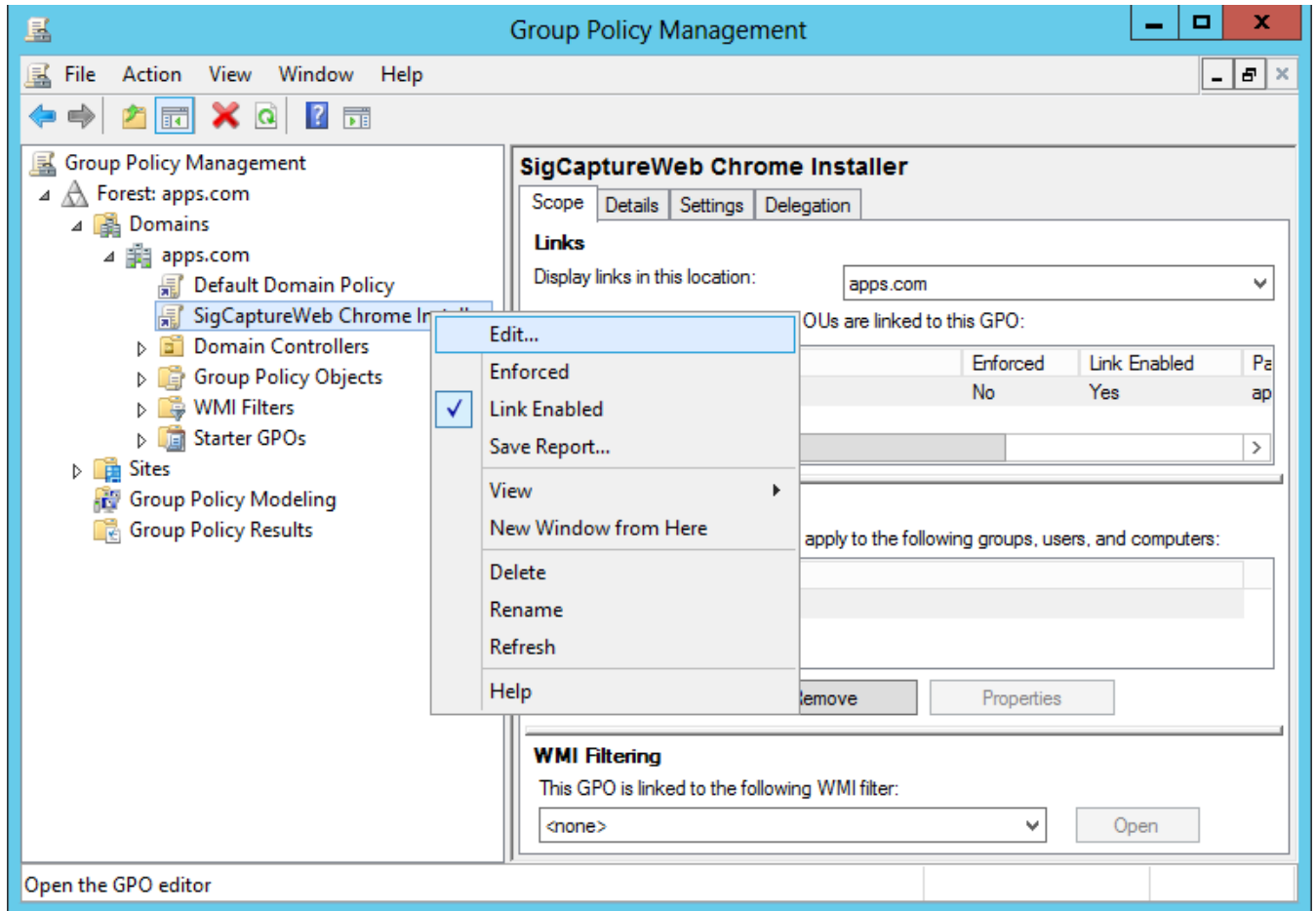
- Enter the new GPO name, for example “SigCaptureWeb Chrome Installer” and click on “OK”



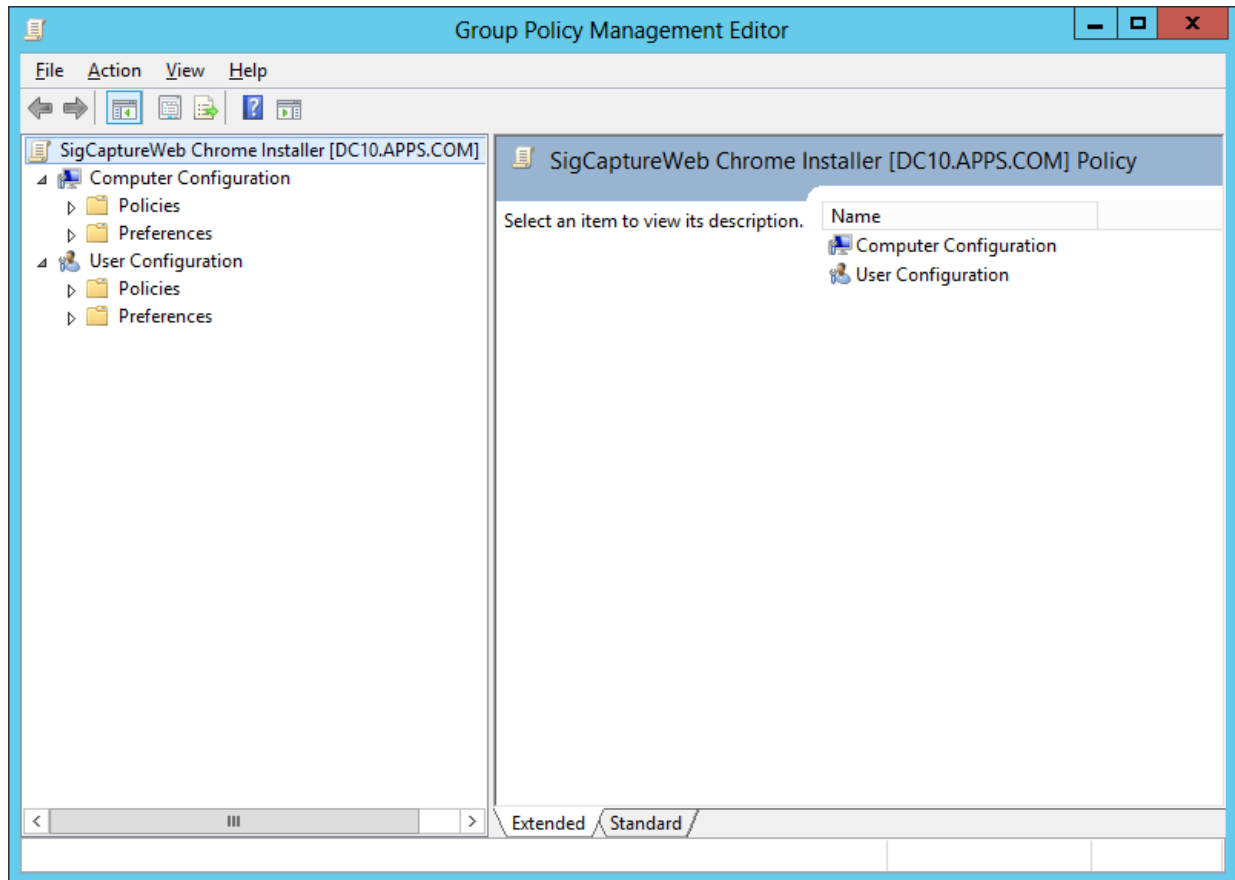
- Expand the domain (e.g.,: apps.com) and observe the “SigCaptureWeb Chrome Installer” object

3.2 – Editing the Group Policy

- Right click on the “SigCaptureWeb Chrome Installer” Object and select Edit option

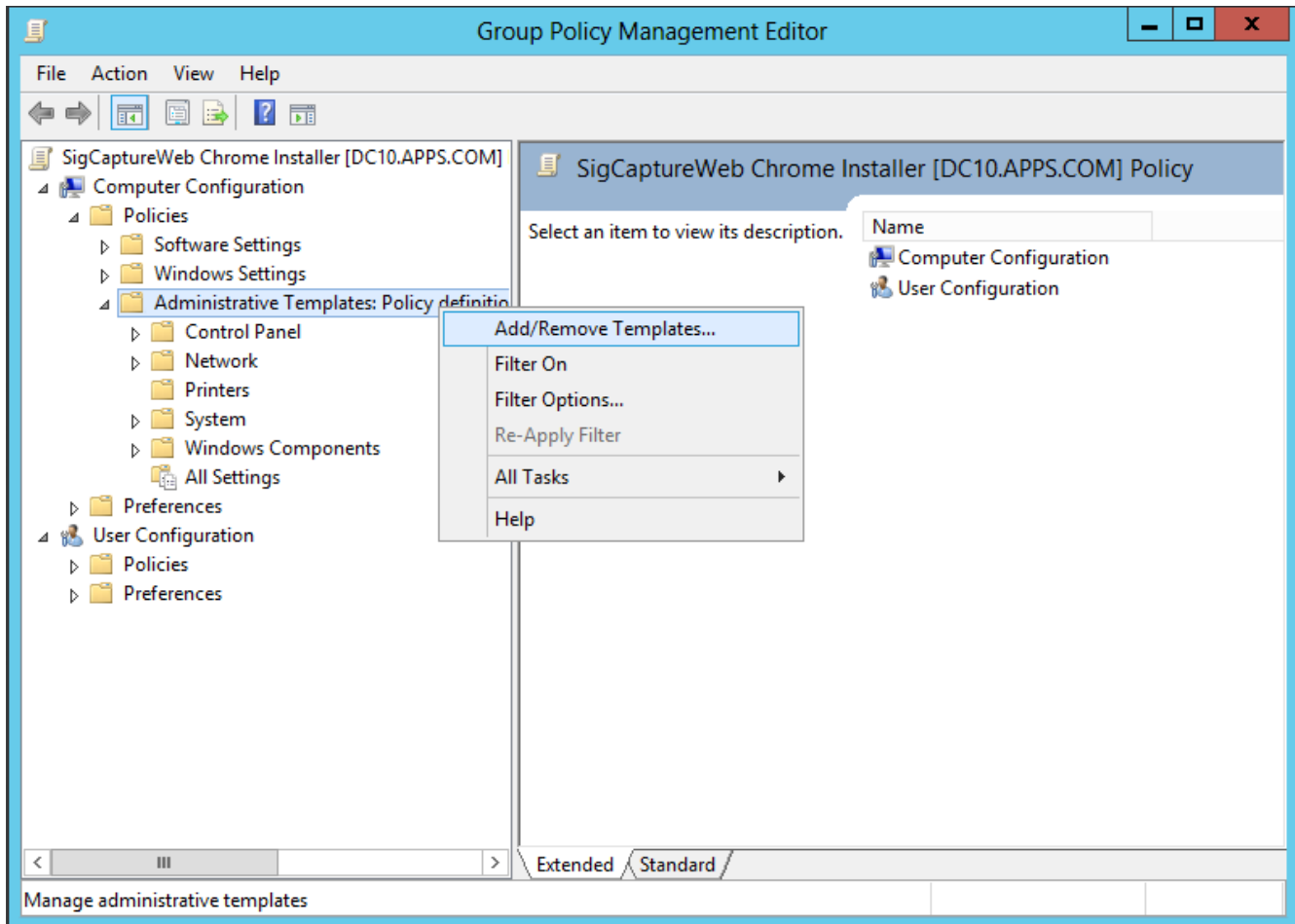


- “Group Policy Management Editor” will be opened as shown below

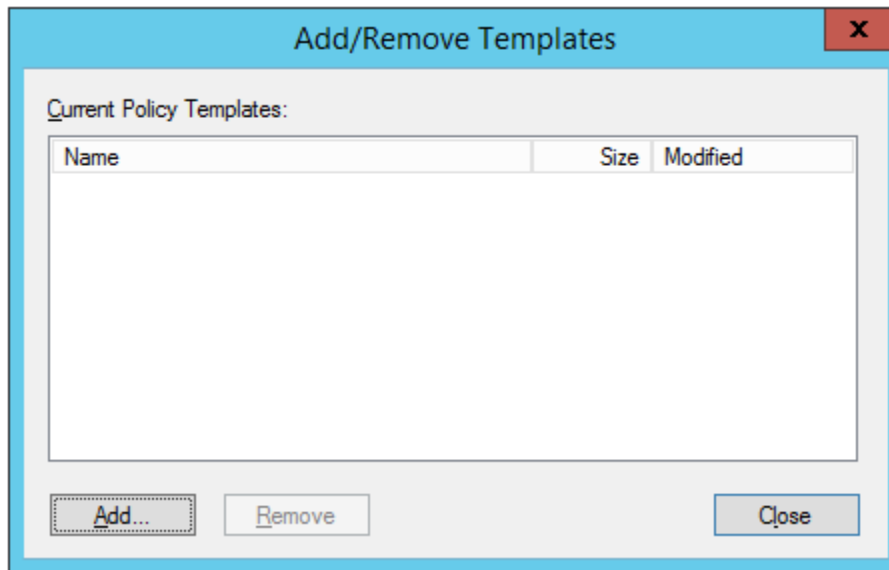


- Expand Policies under Computer Configuration

- Right click on “Administrative Templates” and Click on “Add/Remove Templates”

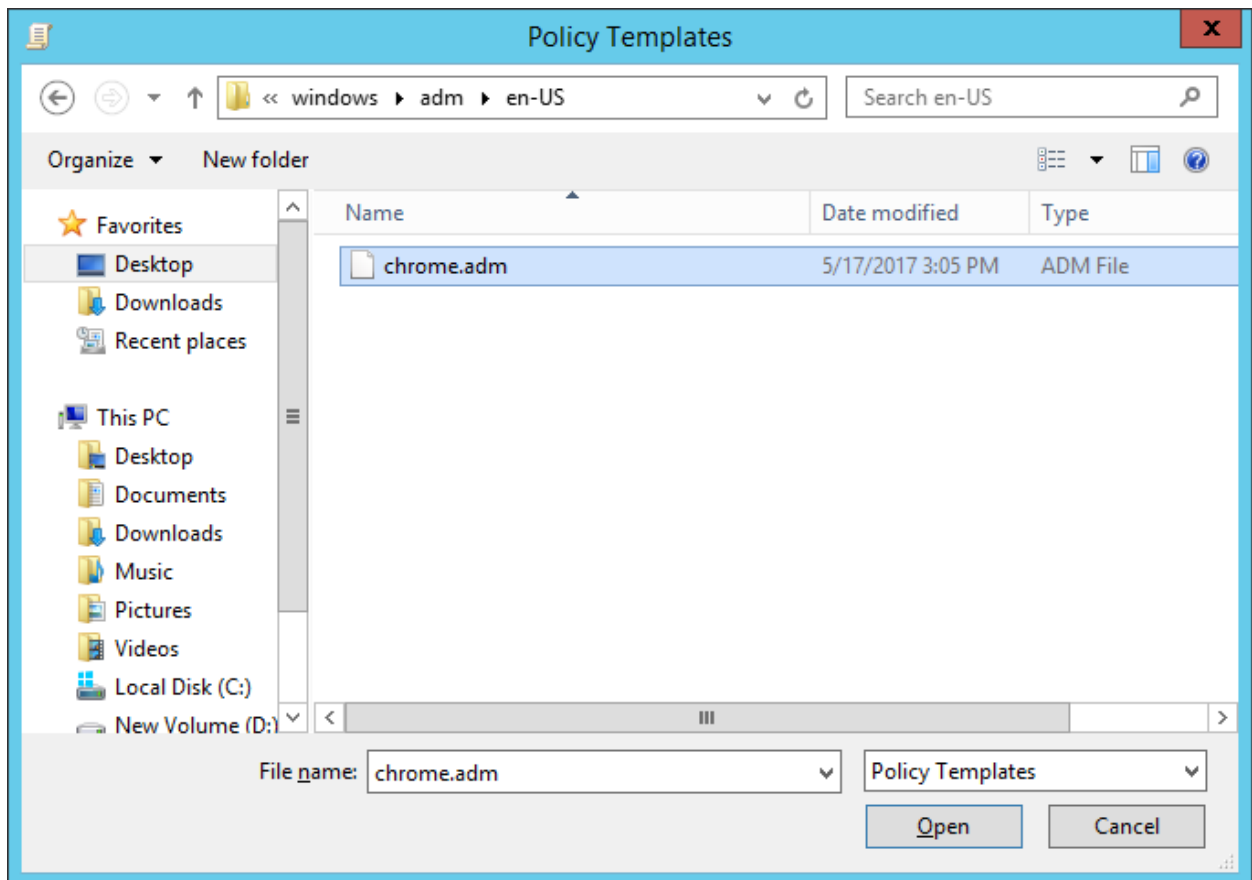


- The “Add/Remove Templates” dialog box will be opened



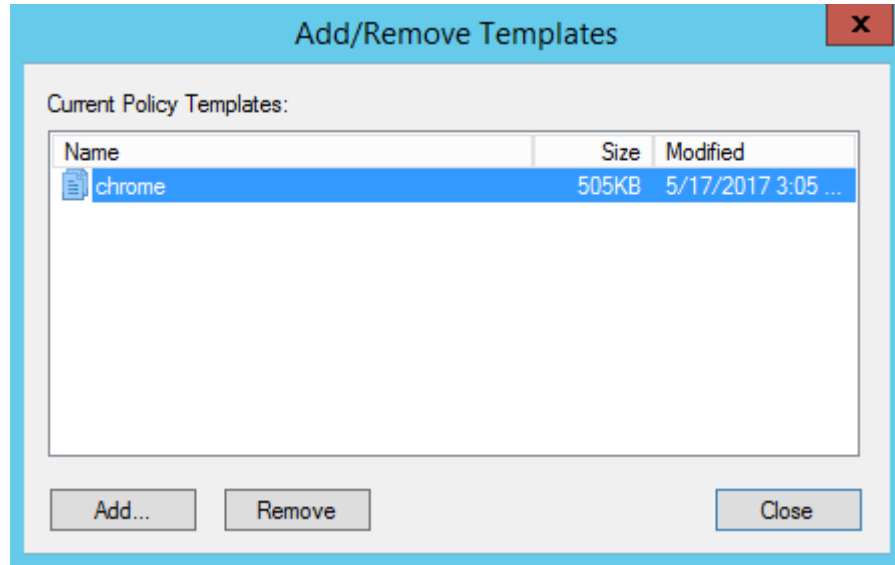
- Click on the “Add” button, and browse for the ”chrome.adm/chrome.admx” file from the policy templates folder. Typical locations are
 - For .adm - ~policy_templates\windows\adm\en-US\chrome.adm
 - For .admx - ~policy_templates\windows\admx\en-US\chrome.admx

Note: - *The Policy Template should be downloaded/copied in the server*

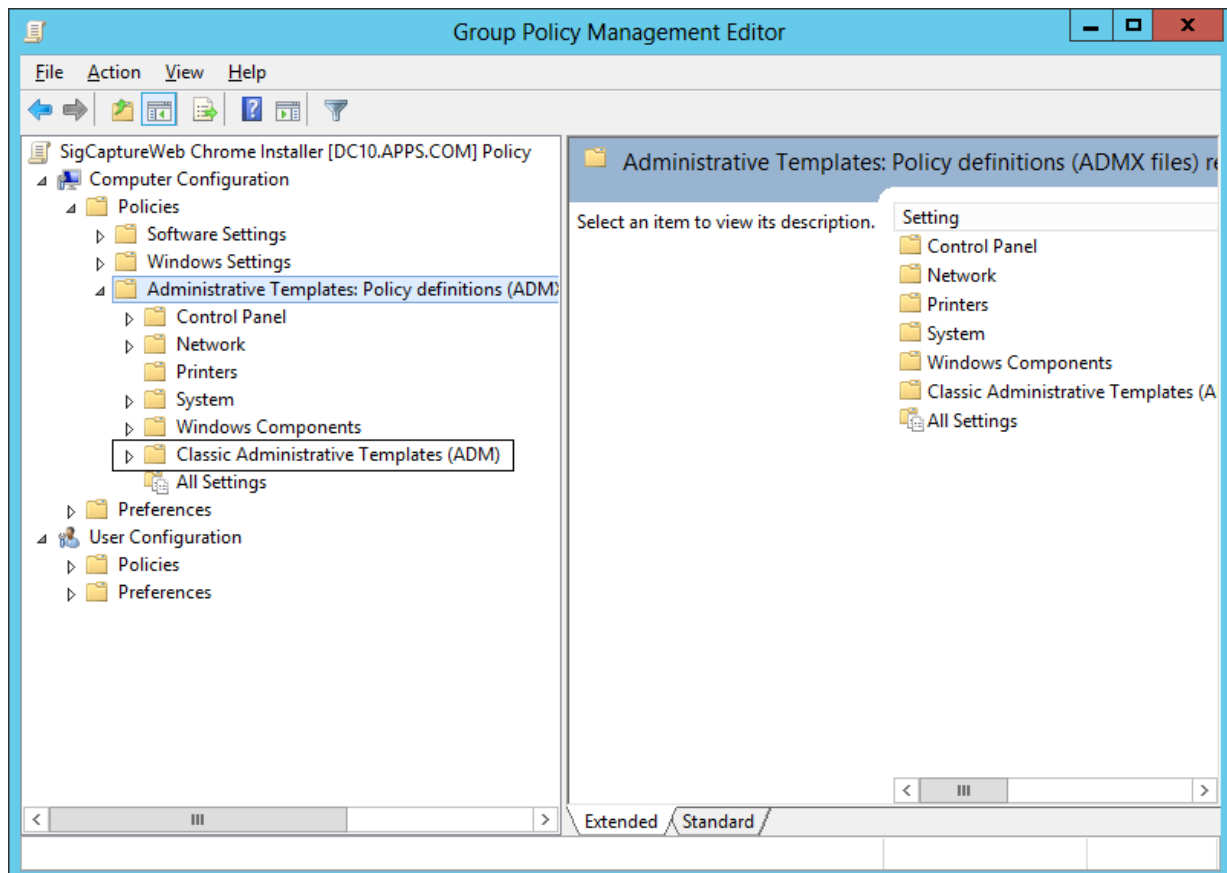


- Click on the “Open” button

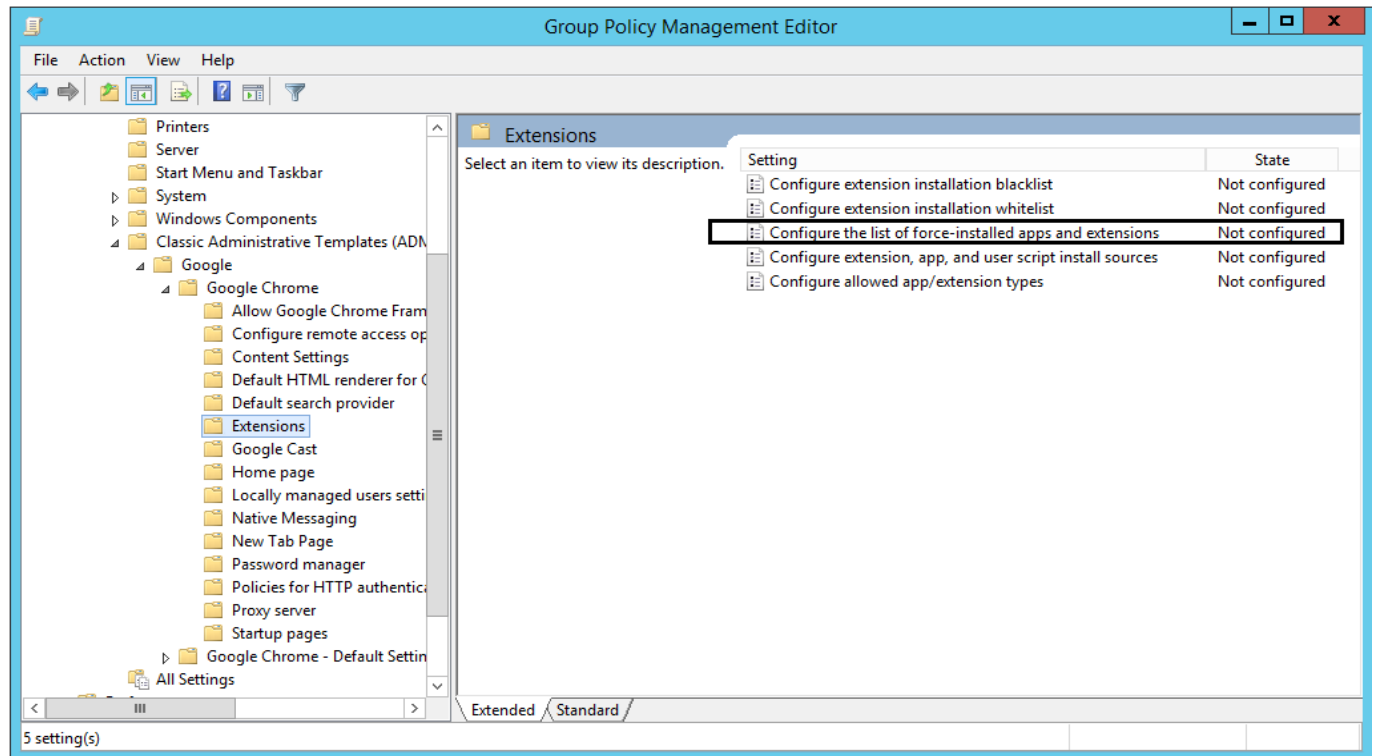
- ADM will be added to the current policy



- Now click on the “Close” button of the template dialog
- It adds “Classic Administrative Templates (ADM)” folder under “Administrative Templates”



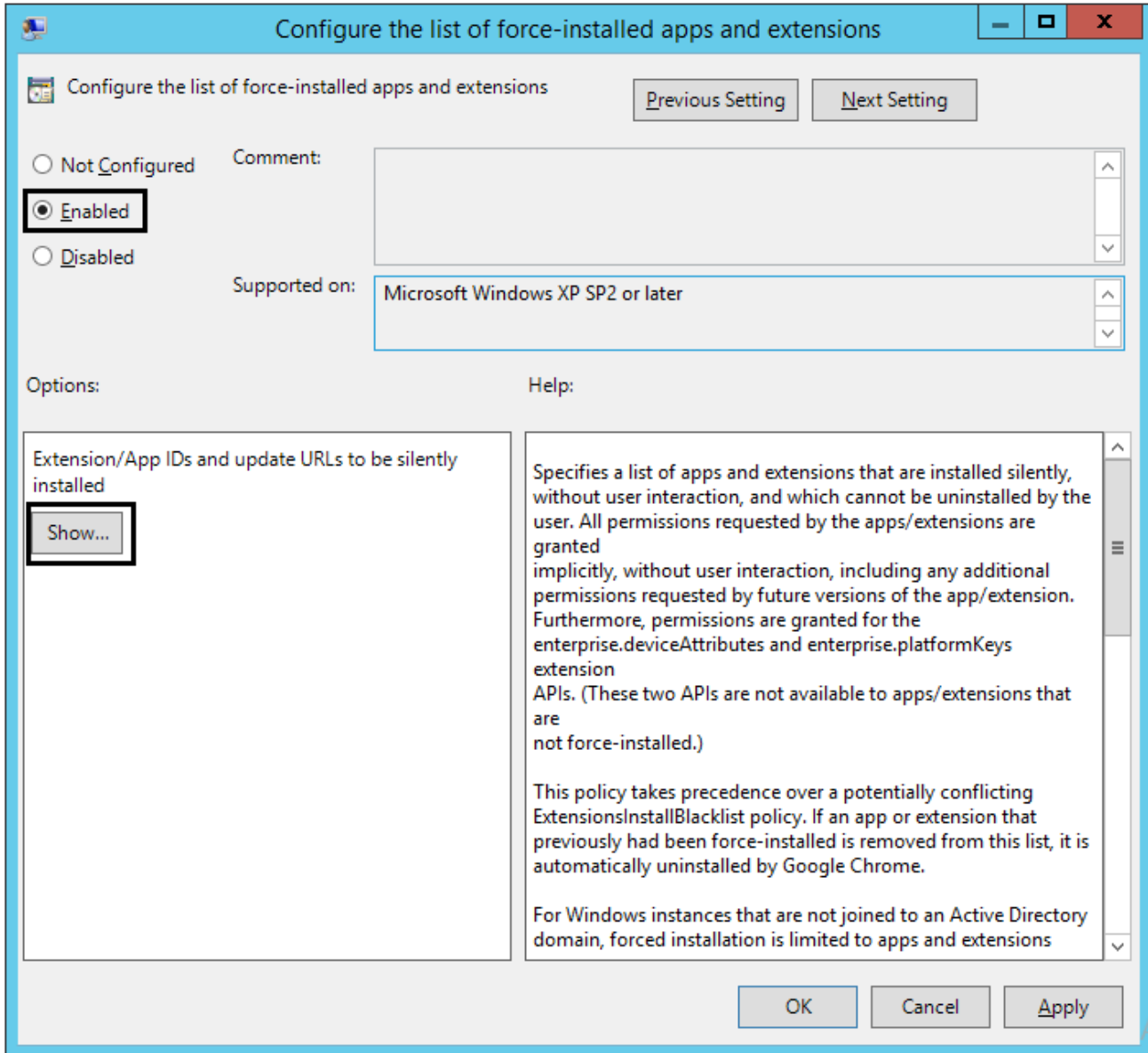
- Expand Classic Administrative Templates (ADM) folder
- Also expand subsequent folders such as “Google”->”Google Chrome”->”Extensions”



- Double click on “Configure the list of force-installed extensions” displayed in right pane of the Editor

3.3 – Configuration

- Select the “Enabled” radio button and click on the “Show” button in the configuration window as shown below to add the Extensions for force-installation.



- Extension ID for the ePadLink SigCaptureWeb SDK is ***idldbjenlmipmpigmfamdlfifkkeeplc***

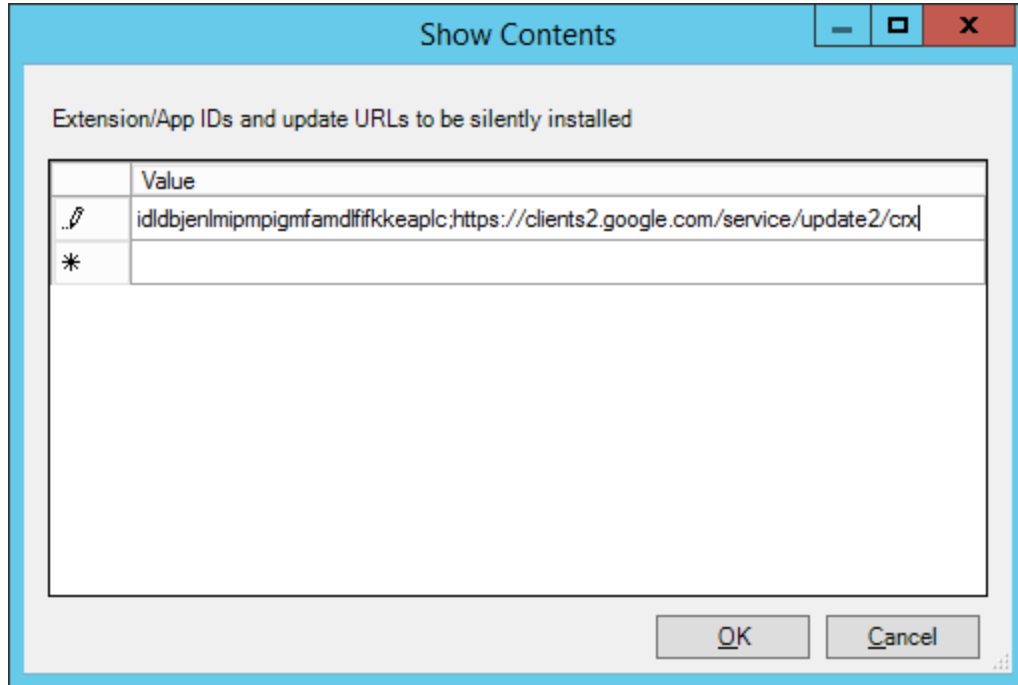
Append the following URL to the Extension ID to install the Chrome Extension ID to Remote Desktop Extension from the standard Chrome Web Store:

https://clients2.google.com/service/update2/crx

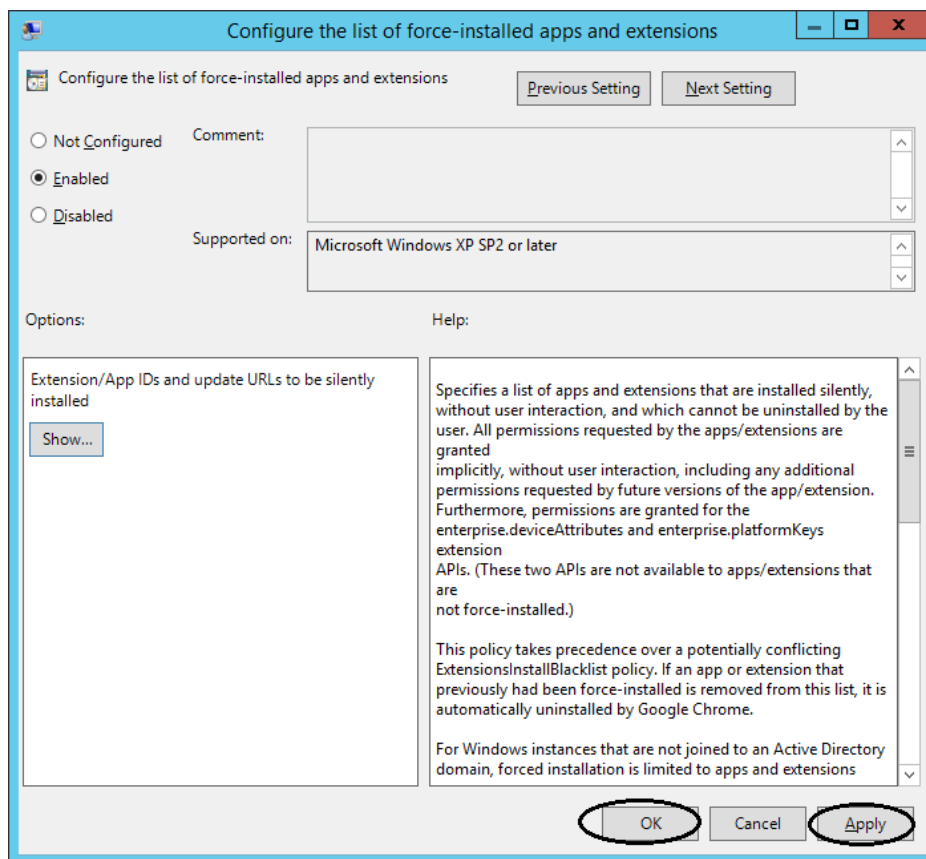
It will show as,

idldbjenlmipmpigmfamdlfifkkeeplc;https://clients2.google.com/service/update2/crx

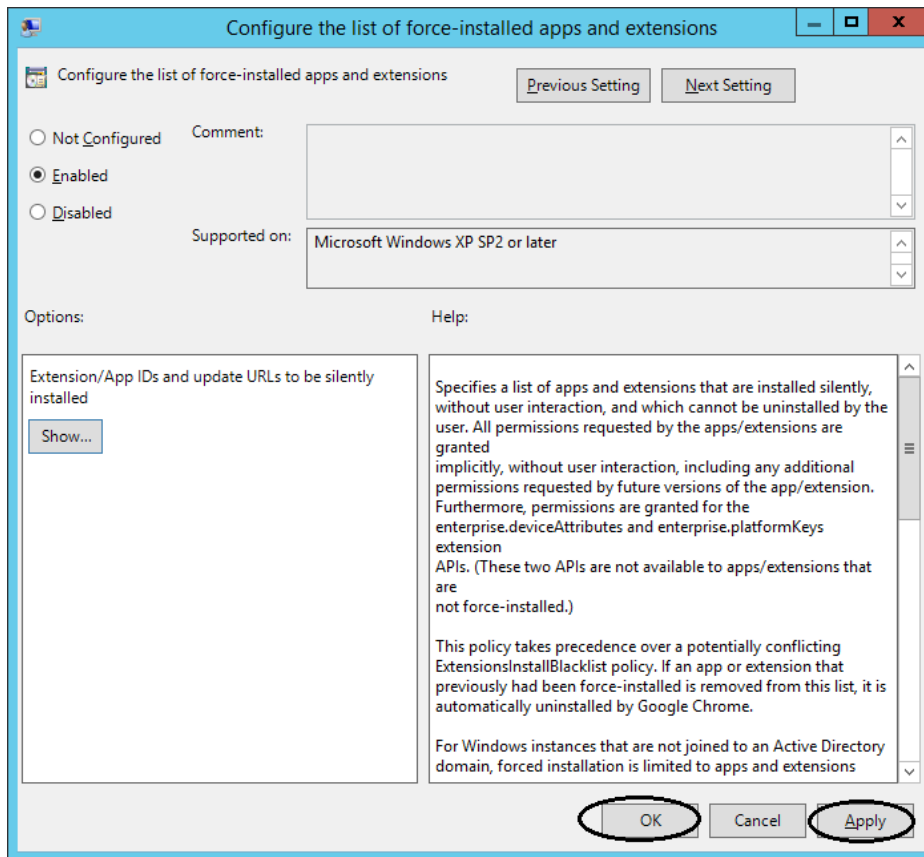
Now, copy this URL into the text holder as shown in the below dialog.
Note: - One can add multiple extensions to the text holder in the below dialog box.



- Click on the “OK” button of Shown Contents dialog.



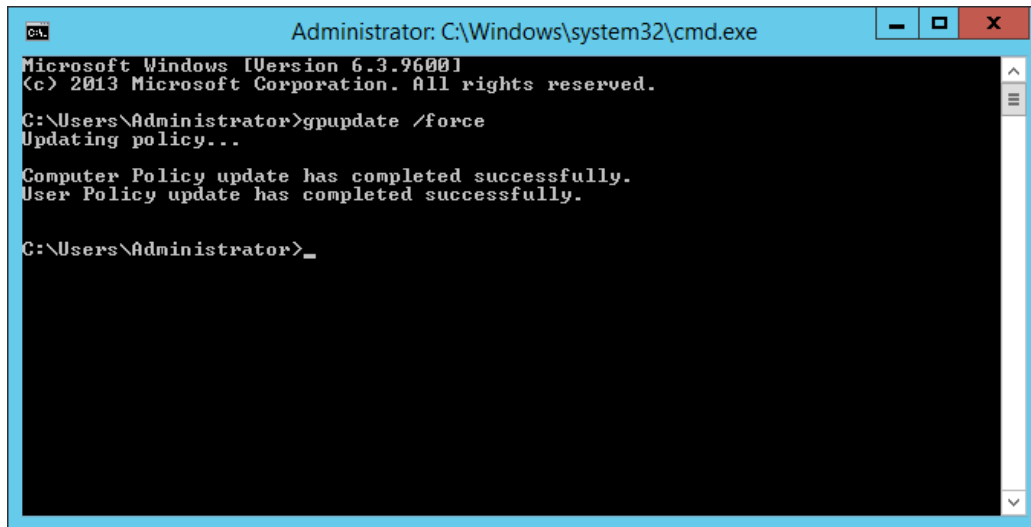
- Then click on the “Apply” and “OK” buttons in the configuration window



Note: - By default, Group Policy refreshes in the background every 90 minutes, with a random offset of 0 to 30 minutes. Or you can refresh the Group Policy instantly by running the command prompt on the server/client machine and typing: “gpupdate /force”.

The Chrome Extension will be installed silently during the above steps.

In Server:



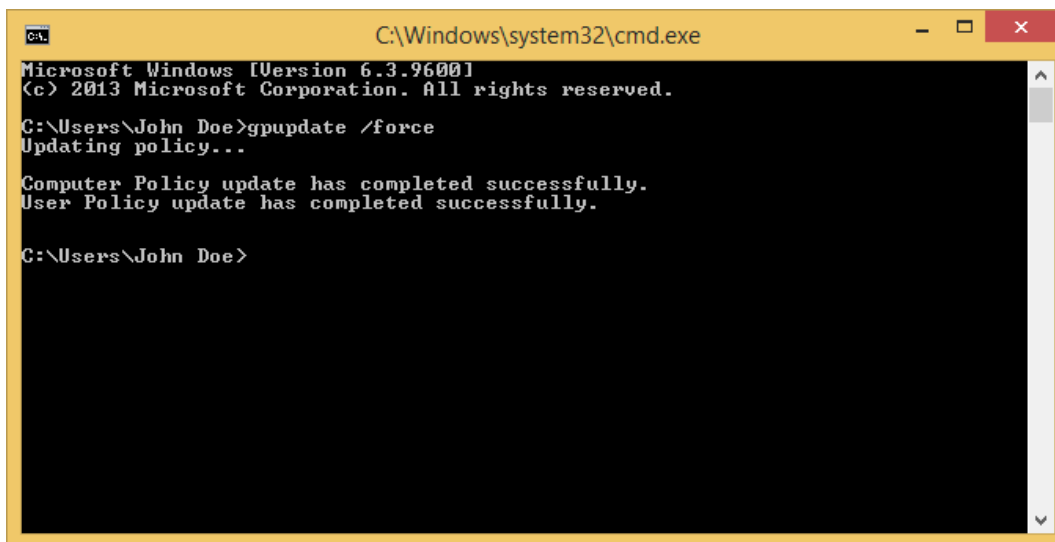
```
Administrator: C:\Windows\system32\cmd.exe
Microsoft Windows [Version 6.3.9600]
(c) 2013 Microsoft Corporation. All rights reserved.

C:\Users\Administrator>gpupdate /force
Updating policy...

Computer Policy update has completed successfully.
User Policy update has completed successfully.

C:\Users\Administrator>_
```

In Client:



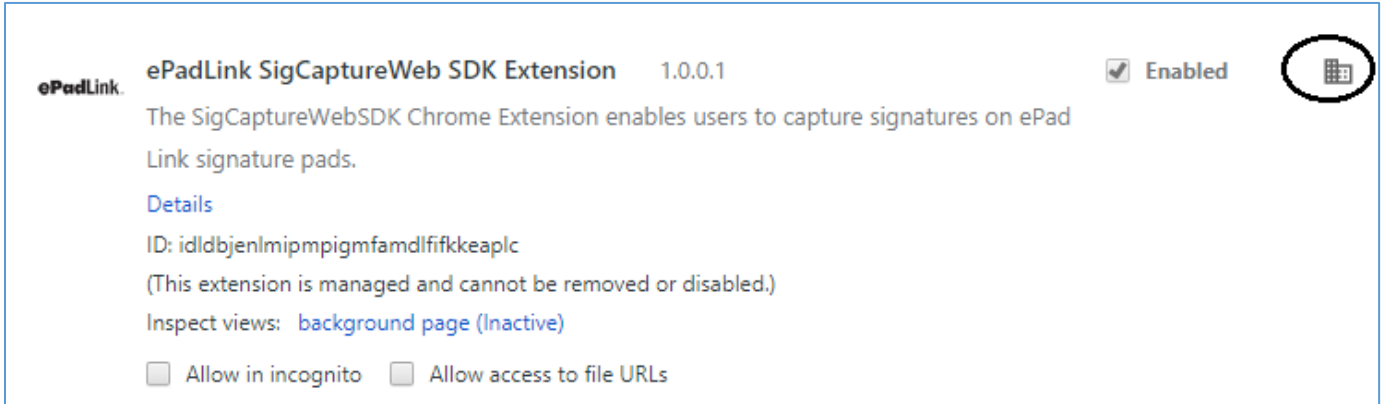
```
C:\Windows\system32\cmd.exe
Microsoft Windows [Version 6.3.9600]
(c) 2013 Microsoft Corporation. All rights reserved.

C:\Users\John Doe>gpupdate /force
Updating policy...

Computer Policy update has completed successfully.
User Policy update has completed successfully.

C:\Users\John Doe>
```

- Server/Client machines will have the “ePadLink SigCaptureWeb SDK Extension” installed and added to the Chrome browser



Note: - *Once the extension is force installed, it cannot be uninstalled by the user from Chrome browser.*