

IntegriSign Capture SDK

Developer's Guide

CONTENTS

1. Introduction	1
2. IntegriSign Capture SDK Key Features	1
3. IntegriSign Capture SDK Integration Overview	1
4. Pre-requisites	2
5. Components of IntegriSign Capture SDK	2
6. SDK Deployment	2
7. Steps to use IntegriSign Capture SDK	3
8. IntegriSign Capture SDK API	3
8.1 esW25COM Component	3
8.1.1 Properties	3
8.1.1.1 HashData	3
8.1.1.2 BackColor	3
8.1.1.3 ForeColor	3
8.1.1.4 Cross	4
8.1.1.5 SignDlgCaption	4
8.1.1.6 ShowSignerName	4
8.1.1.7 ImageThickness	4
8.1.1.8 ConnectedDevice	4
8.1.1.9 DisplayName	4
8.1.1.10 AvailableStartY	5
8.1.1.11 AvailableEndY	5
8.1.1.12 EnableAntiAliasing	5
8.1.1.13 SignThickness	5
8.1.1.14 EnableWhiteSpaceRemoval	5
8.1.1.15 EnableMaxEnlargementFeature	6
8.1.1.16 MaxEnlargementFactor	6
8.1.2 Events supported	7
8.1.3 Signing Methods/Functions	7
8.1.3.1 SetSignerDetailsEx	7
8.1.3.2 GetSignerDetailsEx	8
8.1.3.3 StartSign	8
8.1.3.4 GetSignData	9
8.1.3.5 OpenSign	9
8.1.3.6 ClearSign	9
8.1.3.7 IsSigned	10
8.1.3.8 SaveToFile	10
8.1.3.9 VerifyContents	11
8.1.3.10 GetImageData	11
8.1.3.11 GetImageBytes	12
8.1.3.12 SetSignAppearanceOptionsEx	12
8.1.3.13 SetBkImage	13
8.1.3.14 GetDevices	14
8.1.3.15 setePadDevice	14

8.1.3.16 GenerateImageFromBase64.....	14
8.1.3.17 GenerateImageFromBinary	15
8.1.3.18 CloseConnection.....	15
8.1.3.19 SetSignerDetails	15
8.1.3.20 GetSignerDetails.....	16
8.1.3.21 SetSignAppearanceOptions	17
8.1.3.22 SetAffirmationText.....	17
8.1.3.23 SetUserInfo.....	18
8.1.3.24 SetBkImageEx	18
8.1.3.25 StartSignEx	20
8.1.3.26 SetSignRect	21
8.1.3.27 SaveSigImage.....	21

9. Deploying IntegriSign Capture SDK Components in Windows 2003 64-bit for applications running in IIS22

1. Introduction

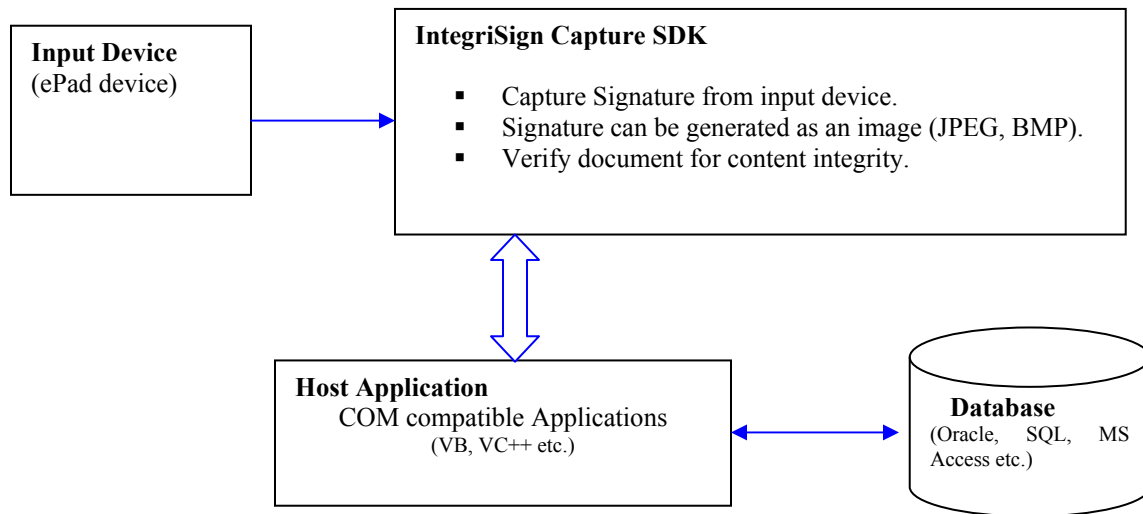
Thank you for choosing IntegriSign Capture SDK, the most comprehensive signature capture software SDK in the market. IntegriSign Capture SDK gives you the features and functionality to Sign and Secure electronic documents/e-mails of any COM compatible applications, using powerful authentication tools. IntegriSign Capture SDK comes with built-in support for handwritten electronic signatures. Electronic signature capture is done through ePad device.

2. IntegriSign Capture SDK Key Features

- Enables applications with Electronic Handwritten Signature capability to capture the signature and secure the content using advanced encryption technologies.
- Allows signature capture through ePad device.
- Simultaneously captures the signer details, time-stamp of signing, location that provide validity to authenticated electronic content.
- Signed content integrity can be verified at any point of electronic transmission or storage.

3. IntegriSign Capture SDK Integration Overview

IntegriSign APIs are bundled within the DLL along with standard User Interface elements. When the host application invokes these API functions, to initiate the act of Signing [StartSign ()], the signature from the input device is captured along with other signer details. This signature data along with content hash [HashData] is encrypted and processed into BASE64 string format.



Input Device: ePad device is used for signature capture.

Host Application: Any COM compliant application like Visual Basic, VC++ etc.

IntegriSign Capture SDK: IntegriSign Capture SDK contains capture component (COM Object with User Interface) and supporting libraries. API functions are available to perform

different tasks such as to generate signature image [SaveToFile ()] and check content Integrity [VerifyContents ()].

Database: The captured signature data (Encrypted Base64 string) can be stored in the host database (Oracle, SQL, DB2, Sybase, MS Access) or in a file system. The stored data is interpreted by IntegriSign API function [OpenSign ()] to reproduce the signature at a later time.

4. Pre-requisites

Optimum System Requirements to install and run IntegriSign Capture SDK

Windows XP/2003/Vista/Windows 7/Windows 8/Windows 10 operating systems

Pentium-class PC

ePad device.

32 megabytes of RAM

10 megabytes of free disk space

5. Components of IntegriSign Capture SDK

The following are the components required by IntegriSign Capture SDK to integrate into any COM enabled application.

1. esW25COM.ocx – The core component responsible for signing of the electronic documents, setting the user preferences and binding the content of the documents to signatures.
2. esUtil.dll - Supporting library for IntegriSign Capture SDK.

6. SDK Deployment

To deploy the IntegriSign Capture SDK components, copy the following files from the SDK folder in the zip file into the client computer.

NOTE: - File 1 (esW25COM.ocx) can be copied into any of the folders on the client computer and must be registered. File 2 (esUtil.dll) must be copied into the windows system folder.

1. esW25COM.ocx (This ocx must be registered).
2. esUtil.dll

7. Steps to use IntegriSign Capture SDK

Follow these steps to make your application IntegriSign enabled.

1. Install the IntegriSign Capture SDK onto your system.
2. List the documents (forms) that are to be signed.
3. Add the Signature component (IntegriSign Core Component for Capture SDK) to the forms by referring to esW25COM.ocx.
4. Set the **HashData** property on the instance of esW25COM component wherever the content integrity is necessary. Typically it should be set before the **StartSign**, **VerifyContents** and **OpenSign** methods.
5. Implement other functionality for Capturing, Storing & Opening signatures taking the following SDK reference.

8. IntegriSign Capture SDK API

Following are the properties, methods and functions that can be used to enable an application with IntegriSign Capture functionality. These functions are available through the esW25COM component.

8.1 esW25COM Component

8.1.1 Properties

8.1.1.1 HashData

Description

This property has to be set with the data that has to be authenticated. These values are taken from the present container viz. a form or document. To implement the content integrity functionality this property has to be set before the sign capturing process. This should also be set wherever you need to check the authenticity of the content. Typically this should be called before using the following methods.

- 1 StartSign
- 2 OpenSign
- 3 VerifyContents

Note: When this property is set to null, hashing is not implemented.

8.1.1.2 BackColor

Description

Sets the background color of the signature component.

8.1.1.3 ForeColor

Description

Sets the color of the signature.

8.1.1.4 Cross

Description

Sets whether the cross-mark needs to be displayed on the signature when the content authentication failed. Two possible values are CROSS_OFF and CROSS_ON.

8.1.1.5 SignDlgCaption

Description

Sets caption for the signature capture dialog.

8.1.1.6 ShowSignerName

Description

Sets whether Signer Name field should be displayed in the signature capture dialog. Two possible values are TRUE or FALSE.

8.1.1.7 ImageThickness

Description

Sets the pen thickness to be used while generating the image of the signature. The values can range from 1 to 10. Default value for this property is 2.

Note: This property is obsolete and is there only for compatibility purposes. Use SignThickness instead.

8.1.1.8 ConnectedDevice

Description

Returns the identifier of the currently connected ePad device. For example

```
{7FCD9512-8763-436E-8747-40972EE28EFD}: ePad  
{98C174D3-6D2A-4509-96DB-D5B34FA7A561}: ePad-ink  
{C1AF33B2-529E-4D2D-B885-DAF2780009EE}: ePadII  
{AC57EF90-C108-417F-A43B-E01613A93BD5}: ePad-vision
```

8.1.1.9 DisplayName

Description

Sets the text to be displayed on the signature object. This text appears when the signature object is not signed. If text needs to be displayed on multiple lines, insert “\n” wherever required.

8.1.1.10 AvailableStartY

Description

Gets the starting point on the Y co-ordinate system available for the Inking Region. The value returned by this property can be used when defining the Inking Region in the SetBkImageEx function. This property needs to be invoked after SetAffirmationText and SetUserInfo methods.

8.1.1.11 AvailableEndY

Description

Gets the ending point on the Y co-ordinate system available for the Inking Region. The value returned by this property can be used when defining the Inking Region in the SetBkImageEx function. This property needs to be invoked after SetAffirmationText and SetUserInfo methods.

8.1.1.12 EnableAntiAliasing

Description

Setting this property to true causes the signature drawing algorithm to use Anti-aliasing technique to smoothen the signature. SignThickness value will not be used when Anti-Aliasing is used.

8.1.1.13 SignThickness

Description

Setting this property causes the signature drawing algorithm to use the specified thickness to draw the signature. Anti-aliasing technique will not be used.

8.1.1.14 EnableWhiteSpaceRemoval

Description

By default the value of this property is set to FALSE. When this setting is FALSE, the signature pad sends to the PC the entire image of the drawing surface of the pad. When this property is set to TRUE, the pad removes the white space around the signature drawn on the pad and sends only the rectangle that contains the signature information to the PC. Thus, when the PC displays the signature on a Signature Field, the signature typically appears larger and more legible (compared to no white space removal), especially in the usual case where the Signature Field in the document is small.

8.1.1.15 EnableMaxEnlargementFeature

Description

By default the value of this property is set to FALSE. This property lets the user to specify if the Maximum Enlargement Feature should be enabled or not. The Maximum Enlargement feature is used only in cases where the size of signature on the signature pad (after white space removal) is smaller than the size of the Signature Field in the application. When the signature drawn on the signature pad is smaller than the size of the Signature Field in the document, IntegriSign will enlarge the signature to fill the Signature Field. However, to limit the enlargement the user can specify a limit to the enlargement as described in the next property.

8.1.1.16 MaxEnlargementFactor

The input variable type for this property is double and the value can range between 1.0 to 2.0. If the **EnableMaxEnlargementFeature** property explained above is set to TRUE and this value is not set, then a default value of 1.25 is considered.

Description

The Maximum Enlargement factor is used only in cases where the size of signature on the signature pad (after white space removal) is smaller than the size of the Signature Field in the application. If the Maximum Enlargement Factor is 1.50 then the signature in the document will be no more than 50% larger than the signature captured on the signature pad.

Both EnableMaxEnlargementFeature and MaxEnlargementFactor are considered only when EnableWhiteSpaceRemoval is set to TRUE.

8.1.2 Events supported

The developer may handle/override the following events from IntegriSign Component.

DbClick
MouseDown
MouseMove
MouseUp

SignCompleteStatus (SignStatus as Long)

Description

Event indicating whether the signature field was signed or not. If the signing process is incomplete (i.e. cancelled) SignStatus is 0 else SignStatus is 1.

This event is fired only when the StartSign method uses a separate signature capture dialog to sign. Hence, event fires when the second parameter of StartSign method is set to "1".

OnFirstTouch ()

Description

Event fires when the user first touches the device (i.e. when the user starts inputting the signature).

8.1.3 Signing Methods/Functions

[8.1.3.1 SetSignerDetailsEx](#)

Description

The Signer details like Name, Organization etc. can be set using this method. This information is set so that it can be used as signer reference. This method, if implemented, should be called before the **StartSign** method to define 'who' is signing.

Parameters

Name (In) – Data type String - Name of the signer

OrgUnit (In) – Data type String - Organization unit of the signer

OrgName (In) – Data type String - Organization name of the signer

City (In) – Data type String - Location of the signer

State (In) – Data type String – State

Country (In) – Data type String - Country of the signer

eMail (In) – Data type String – Signer eMail address

SignLocation (In) – Data type String - Location from where the signer is signing.

Note: All the Parameters can take NULL values.

Return Value

This function returns nothing.

8.1.3.2 GetSignerDetailsEx

Description

This method returns the Signer details stored in the signature component.

Parameters

Name (In/Out) – Data type String - Name of the signer

OrgUnit (In/Out) – Data type String - Organization unit of the signer

OrgName (In/Out) – Data type String - Organization name of the signer

City (In/Out) – Data type String - Location of the signer

State (In/Out) – Data type String – State

Country (In/Out) – Data type String - Country of the signer

eMail (In/Out) – Data type String – Signer eMail address

SignLocation (In/Out) – Data type String - Location from where the signer is signing.

Note: All the Parameters can take NULL values.

Return Value

Returns values are set through the parameters in the above order.

8.1.3.3 StartSign

Description

Invokes Signature capture Dialog and user can start the “act of signing”.

Parameters

bs – Type ButtonStyle – To specify the type of buttons required.

The Styles available are BT_OK, BT_OK_CLEAR, BT_OK_CANCEL, BT_OK_CANCEL_CLEAR (default button style) and BT_NONE.

int signDlgReq – Specifies whether a separate signature capture dialog gets displayed or not. Value of “1” indicates that the signature capture dialog is required

and "0" indicates that the signature capture is directly reflected on the signature control. This parameter is optional and if not specified, signing dialog is shown.

Return Value

StartSign method returns following values depending on the hotspots clicked.

BT_PRESSED_OK
BT_PRESSED_CANCEL

8.1.3.4 GetSignData

Description

This function returns the signature data in an encrypted Base64string Format. If not signed, it returns a null string.

Parameters

This takes no inputs.

Return Value

Signature data in encrypted Base64String format.

8.1.3.5 OpenSign

Description

Use this function to open and view the signature from the encrypted Base64String on the signature component.

Parameters

StrData – An IntegriSign signature string of encrypted Base64String Format.

Return Value

This function returns nothing.

*Note: Method **GetSignData** was used originally to generate encrypted base64string from the signature component.*

8.1.3.6 ClearSign

Description

This clears the signature on the component, if any.

Parameters

This takes no inputs.

Return Value

This function returns nothing.

8.1.3.7 IsSigned

Description

Indicates whether the component is signed or not.

Parameters

This takes no inputs

Return Value

Returns a Long.

0 – The component is not signed

1 – The component is signed.

8.1.3.8 SaveToFile

Description

Saves the signature as an image file (bmp, jpeg, gif) in the set location.

Parameters

FileName – Data type String - Complete file Path where the bmp image is to be saved.

nHeight – Data type Integer - Height of the bmp image in pixels.

nWidth – Data type Integer - Width of the bmp image in pixels.

FileType - Data type FILETYPE – Indicates type of file (image) storage.
(BMP = 0, JPEG =1, GIF=2)

ImageQuality – Data type Integer – For image quality (jpeg). An Optional parameter.

GIFtransparency – Data type Integer – For Non-transparent GIF the value is 0 and for transparent GIF the value is 1. An Optional parameter.

Note: ImageQuality should be between 0 and 100. If the parameter is not set or is set to zero ImageQuality is taken as 80 by default.

Return Value

This returns nothing.

8.1.3.9 VerifyContents

Description

Performs the hashing operation and returns the content integrity status. **HashData** property has to be set before calling this method.

Parameters

This takes no inputs.

Return Value

- 0 – Hashed content has not changed since signing.
- 1 – Hashed content was modified after signing.
- 2 – Hashing was not implemented.

8.1.3.10 GetImageData

Description

Returns encoded (Base64) Signature image data for storage as string.

Parameters

nHeight – Data type Integer - Height of the bmp image in pixels.

nWidth – Data type Integer - Width of the bmp image in pixels.

FileType - Data type FILETYPE – Indicates type of file (image) storage.
(BMP = 0, JPEG =1, GIF=2)

ImageQuality – Data type Integer – For image quality (jpeg). An Optional parameter.

GIFTransparency – Data type Integer – For Non-transparent GIF the value is 0 and for transparent GIF the value is 1. An Optional parameter.

Note: ImageQuality should be between 0 and 100. If the parameter is not set or is set to zero ImageQuality is taken as 80 by default.

Return Value

ImageData – Data type String - Encoded (Base64) Signature image data for storage.

[8.1.3.11 GetImageBytes](#)

Description

Returns Signature image data for storage as a Byte array.

Parameters

nHeight – Data type Integer - Height of the bmp image in pixels.

nWidth – Data type Integer - Width of the bmp image in pixels.

FileType - Data type FILETYPE – Indicates type of file (image) storage.
(BMP = 0, JPEG =1, GIF=2)

ImageQuality – Data type Integer – For image quality (jpeg). An Optional parameter.

GIFtransparency – Data type Integer – For Non-transparent GIF the value is 0 and for transparent GIF the value is 1. An Optional parameter.

Note: ImageQuality should be between 0 and 100. If the parameter is not set or is set to zero ImageQuality is taken as 80 by default.

Return Value

ImageBytes – Data type ByteArray - Signature image bytes for storage.

[8.1.3.12 SetSignAppearanceOptionsEx](#)

Description

This function lets you specify the information to be displayed and printed along with the signature.

Parameters

PenColor (In) – Data type Long

ShowName (In) – Data type Integer

ShowDate (In) – Data type Integer

ShowLogo (In) – Data type Integer

ShowLocation (In) – Data type Integer

ShowLabels (In) – Data type Integer

For all the above parameters a value of 1 means true and 0 means false.

Return Value

This function does not return any value.

8.1.3.13 SetBkImage

Description

You can specify the bitmap and the coordinates for ink region (when user scribbles) using SetBkImage method. This method should be called before StartSign method.

Parameters

Filename (In) – Data type String – Complete path of the image file (including name) to be set for display on the ePadInk device.

The selected bitmap should be a monochrome image with 320 X 200 resolution.

LeftX (In) – Data type Integer - Left X co-ordinate of the area

TopY (In) – Data type Integer - Top Y co-ordinate of the area.

RightX (In) – Data type Integer - Right X co-ordinate of the area.

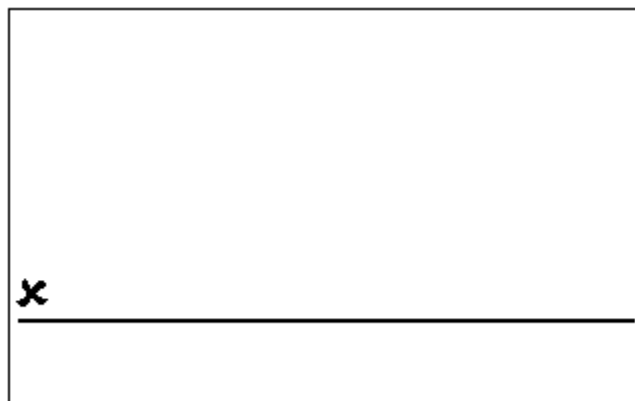
BottomY (In) – Data type Integer - Bottom Y co-ordinate of the area.

Return Value

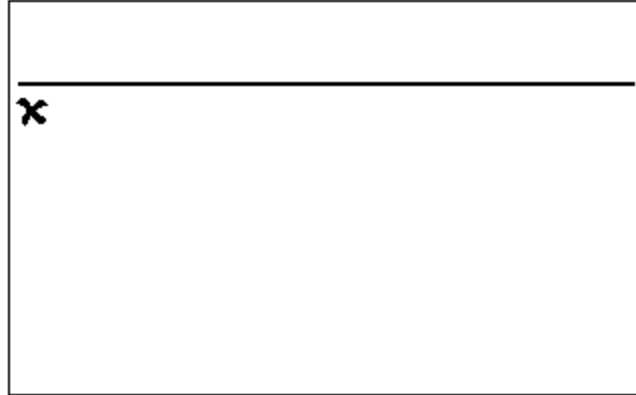
This function does not return any value.

Image Orientation:

As explained above, the image should be a monochrome image with 320 * 200 pixels and it should be flipped vertically. For example, if you want the image to be displayed on the device as



the original image should be as shown below.



NOTE: It is recommended to use the SetBkImageEx method instead of the SetBkImage method. SetBkImage method is maintained to support legacy applications developed using versions of IntegriSign Desktop before 7.5.4.

8.1.3.14 GetDevices

Description

Enumerates the all the installed device providers and returns an array containing their information i.e. ClassID and Description.

Parameters

No input parameters

Return Value

String Array, containing the list of providers.

8.1.3.15 setePadDevice

Description

Sets the device for initiating the act-of-signing. The device to be set is selected from the list of installed providers.

Parameters

ClassID of the device as String.

Return Value

No return value.

8.1.3.16 GenerateImageFromBase64

Description

Generates the signature image from the supplied Base64 image string.

Parameters

ImageStr – Image data as Base64 string.

FilePath – File Path including the name where the image needs to be saved.

Return Value

Long – Indicates whether the image is saved successfully.

0 – Success

1 – Failure

8.1.3.17 GenerateImageFromBinary

Description

Generates the signature image from the supplied binary data.

Parameters

ImageData – Image data as a byte array.

FilePath – File Path including the name where the image needs to be saved.

Return Value

Long – Indicates whether the image is saved successfully.

0 – Success

1 – Failure

8.1.3.18 CloseConnection

Description

Closes the connection with the ePad device.

Return Value

No Return Value.

8.1.3.19 SetSignerDetails

Description

The Signer details like Name, Organization etc. can be set using this method. This information is set so that it can be used as signer reference. This method, if implemented, should be called before the **StartSign** method to define 'who' is signing.

Parameters

Name (In) – Data type String - Name of the signer

OrgUnit (In) – Data type String - Organization unit of the signer
OrgName (In) – Data type String - Organization name of the signer
City (In) – Data type String - Location of the signer
State (In) – Data type String – State
Country (In) – Data type String - Country of the signer
eMail (In) – Data type String – Signer eMail address
SignLocation (In) – Data type String - Location from where the signer is signing.
bReserved(In) – Data type String - reserved parameter.

Note: All the Parameters can take NULL values.

Return Value

This function returns nothing.

NOTE: It is recommended to use the `SetSignerDetailsEx` method instead of the `SetSignerDetails` method. `SetSignerDetails` method is maintained to support legacy applications.

8.1.3.20 GetSignerDetails

Description

This method returns the Signer details stored in the signature component.

Parameters

Name (In/Out) – Data type String - Name of the signer
OrgUnit (In/Out) – Data type String - Organization unit of the signer
OrgName (In/Out) – Data type String - Organization name of the signer
City (In/Out) – Data type String - Location of the signer
State (In/Out) – Data type String – State
Country (In/Out) – Data type String - Country of the signer
eMail (In/Out) – Data type String – Signer eMail address
SignLocation (In/Out) – Data type String - Location from where the signer is signing.
bReserved (In/Out) – Data type String – reserved parameter.

Note: All the Parameters can take NULL values.

NOTE: It is recommended to use the `GetSignerDetailsEx` method instead of the `GetSignerDetails` method. `GetSignerDetails` method is maintained to support legacy applications.

8.1.3.21 SetSignAppearanceOptions

Description

This function lets you specify the information to be displayed and printed along with the signature.

Parameters

PenColor (In) – Data type Long

ShowName (In) – Data type Integer

ShowDate (In) – Data type Integer

ShowLogo (In) – Data type Integer

sReserved (In) – Data type Integer. A reserved parameter.

ShowLocation (In) – Data type Integer

ShowLabels (In) – Data type Integer

For all the above parameters a value of 1 means true and 0 means false.

Return Value

This function does not return any value.

NOTE: It is recommended to use the `SetSignAppearanceOptionsEx` method instead of the `SetSignAppearanceOptions` method. `SetSignAppearanceOptions` method is maintained to support legacy applications.

8.1.3.22 SetAffirmationText

Description

Sets the affirmation text to be displayed on the ePadInk device during signature capture.

Parameters

Affirmation Text – Type String

Return Value

Returns the error number as Integer.

0 – No error

11 – Text length is too long

12 – More number of lines are required to display the text than supported 6 lines.

13 – No Data

Note: Number of lines supported for Affirmation Text on the ePadInk device is 6. If affirmation text needs to be displayed in multiple lines as intended by the application, insert “\n” wherever required. If “\n” is not found in the text, the algorithm in the component breaks the data into multiple lines accordingly.

8.1.3.23 SetUserInfo

Description

Sets the User Information to be displayed below the signing area on the ePadInk device during signature capture.

Parameters

User Info – Type String

Return Value

Returns the error number as Integer.

0 – No error

11 – Text length too long

12 – More number of lines are required to display the text than supported 2 lines.

13 – No Data

Note: Number of lines supported for User Information on the ePadInk device is 2. If User Information needs to be displayed in multiple lines as intended by the application, insert “\n” wherever required. If “\n” is not found in the text, the algorithm in the component breaks the data into multiple lines accordingly.

8.1.3.24 SetBkImageEx

Description

Sets the bitmap and the coordinates for ink region (when user scribbles) using SetBkImageEx method. This method should be called before StartSignEx method and after SetAffirmationText, SetUserInfo methods. If the last optional parameter FolderName is not specified, by default the folder is assumed as Windows system folder.

Parameters

Filename (In) – Data type String – Image file name excluding path. Currently only BMP images are supported.

StartX (In) – Data type Integer - Starting X co-ordinate of the area- Value can be between 0 and 320.

StartY (In) – Data type Integer – Top Left Y co-ordinate of the area. Value should be in between the values obtained from properties [AvailableStartY](#) and [AvailableEndY](#).

EndX (In) – Data type Integer - Ending X co-ordinate of the area- Value can be between 0 and 320.

EndY (In) – Data type Integer – Bottom Right Y co-ordinate of the area. Value should be in between the values obtained from properties [AvailableStartY](#) and [AvailableEndY](#). The maximum height is 199 pixels.

The above four parameters define the Inking Region on the screen.

FolderName (In) – Optional Parameter – Folder Path of the Image file if it is other than Windows System folder.

Return Value

Returns the error number as Integer.

- 0 - No error
- 1 - The specified Image File not found
- 2 - Invalid Image
- 3 - The specified image is not a monochrome image.
- 4 - Image height is greater than the available inking area.
- 5 - Image Width greater than the available inking area.
- 6 - Invalid ink region specified.

Image Orientation:

ePad-ink:

The image should be a monochrome image. The colors in the image should be inverted. For example, if you want the image to be displayed on the device as



the original image should be as shown below.



ePad-vision:

Currently ePad-vision does not support this method. Even if this method used, the image specified would not be displayed on the device.

[*8.1.3.25 StartSignEx*](#)

Description

Invokes the “act of signing”.

Parameters

BUTTON_TYPE_EX bTypeEx – Type ButtonStyle –

Possible values for this parameter are

- BT_One_Left = 0*
- BT_One_Right = 1*
- BT_One_Center = 2*
- BT_Two_Left = 3*
- BT_Two_Right = 4*
- BT_Two_Cente = 5*
- BT_Three = 6*

Captions – String containing the Captions for the buttons. The names of the buttons are to be separated by “~”. Example : “Cancel~Clear~Accept”

Return Value

StartSignEx method returns the name of the button that was clicked by the User. For Example, Cancel or Clear or Accept.

8.1.3.26 SetSignRect

Description

Sets the percentage of the signature object to be used for drawing the signature.

Parameters

WidthPercent – Percentage of Signature Object Width to be used. Default value is 80.

HeightPercent – Percentage of Signature Object Height to be used. Default value is 80.

Return Value

No Return Value.

Note: This method is obsolete and is there only for compatibility purposes.

8.1.3.27 SaveSigImage

Description

Saves the signature as an image file (bmp, jpeg, gif) in the set location.

Parameters

FileName – Data type String - Complete file Path where the bmp image is to be saved.

nHeight – Data type Integer - Height of the bmp image in pixels.

nWidth – Data type Integer - Width of the bmp image in pixels.

FileType - Data type Integer – Indicates type of file (image) storage.
(BMP = 0, JPEG =1, GIF=2)

ImageQuality – Data type Integer – For image quality (jpeg). An Optional parameter.

GIFtransparency – Data type Integer – For Non-transparent GIF the value is 0 and for transparent GIF the value is 1. An Optional parameter.

Note: ImageQuality should be between 0 and 100. If the parameter is not set or is set to zero ImageQuality is taken as 80 by default.

Return Value

This returns nothing.

9. Deploying IntegriSign Capture SDK Components in Windows 2003 64-bit for applications running in IIS

This section explains the additional steps required for using the IntegriSign Capture SDK core component in applications running in IIS on 64 bit Windows 2003 Operating system.

Deployment Files required:

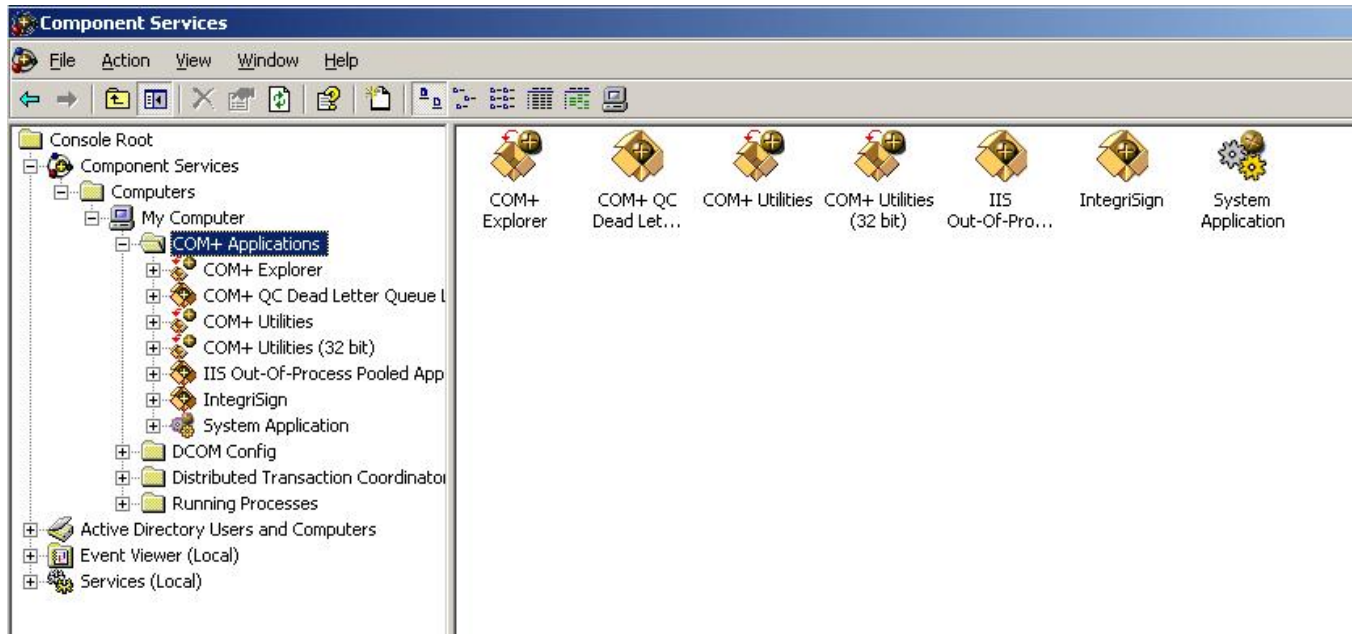
1. Copy esW25COM.ocx into any folder on the machine and register it using regsvr32 utility.
2. Copy esUtil.dll to SysWOW64 folder under Windows folder (typically "C:\Windows\SysWOW64").

Configuring the above esW25COM.ocx using Component Services to enable the component for running applications under IIS:

1. Open Component Services from "Control Panel -> Administrative Tools".
2. Navigate to "Component Services -> My Computer -> COM+ Applications".
3. Right Click on "COM+ Applications" and select "New -> Application".
4. Click "Next" in the "COM+ Application Installation Wizard".
5. Click on "Create an empty application".
6. Enter a name (eg. IntegriSign) for the application and then click on "Next". Server application gets selected as default and do not change this option.
7. In the following Set Application Identity screen, click on "Next" without changing any selection. "Interactive User – currently logged on user" will be selected by default.
8. In the "Add Application Roles" select "CreatorOwner" and then click on "Next".
9. In the following screen (i.e. Add Users to Roles) expand "CreatorOwner" and select "Users". Click on "Add" button.
10. In the displayed window (i.e. Select Users or Groups), click on "Advanced" and then select "Find Now" in the displayed window.
11. In the displayed User List, select "Network Service" and click on "OK". Click on "OK" in the Select Users or Groups window too.
12. Click on "Next" in the Add Users to Roles window.

13. Finish the Wizard.

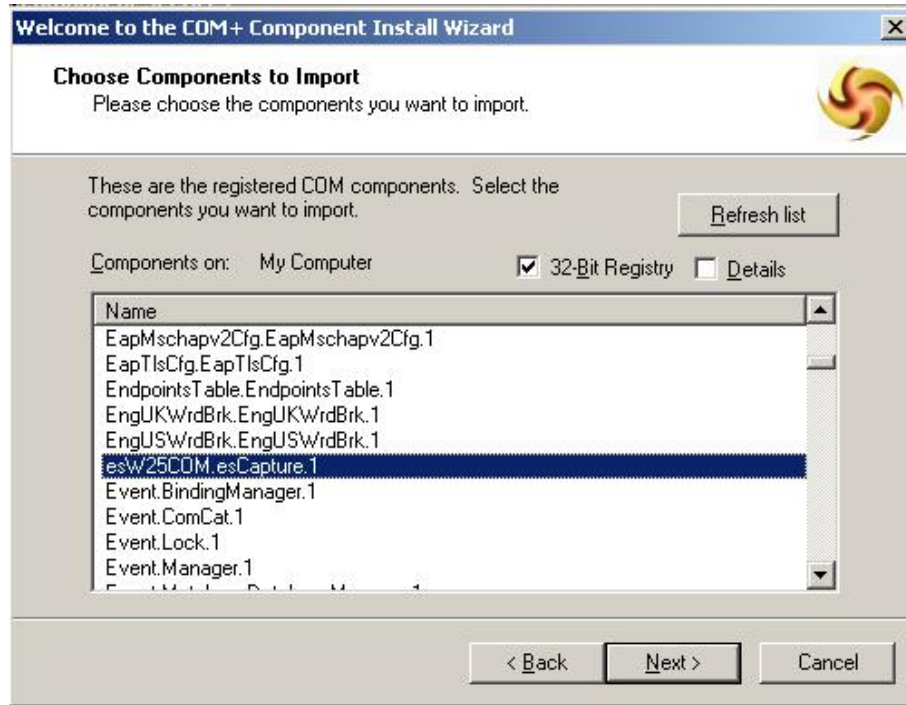
14. One will now be able to see the newly created Application under COM+ applications as shown below.



15. Now, select IntegriSign -> Components. Right click on "Components" and select "New -> Component". This will bring up the COM+ Component Install Wizard. Click on "Next".

16. In the displayed window (i.e. Import or Install a component) select "Import component(s) that are already registered".

17. In the displayed window (i.e. Choose components to Import), select the check box "32-Bit registry" and then select "esW25COM.esCapture.1" as shown below. Click on "Next" to continue.



18. Finish the COM+ Component Install Wizard by clicking on "Finish".

Now one can run the applications under IIS without any problem. Once the above process is completed, one will not see the error "Retrieving the COM class factory for component with CLSID {84C046A7-4370-4D91-8737-87C12F4C63C5} failed due to the following error: 80040154" when using .NET as the platform.