

ePad supports VMware View VDA

Preface

This document assumes IT has already setup the VMware View Connection Server over the network. This document will describe the guidelines to setup ePad USB devices, through USB redirection, on the VMware View Client machines.

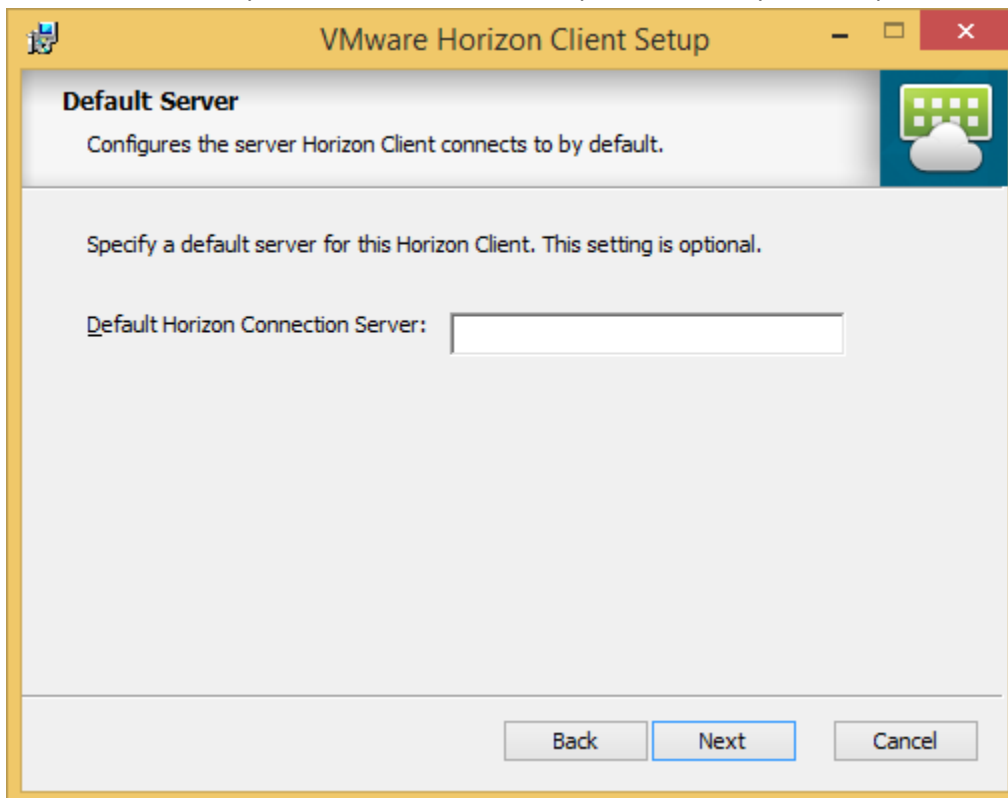
Installation the “VMware Horizon Client” software

- The VMware Horizon client software can be downloaded from the following link:
https://my.vmware.com/web/vmware/info/slug/desktop_end_user_computing/vmware_horizon_clients/3_0

Please select the VMware Horizon Client for 32-bit or 64-bit Windows.

- Installation notes

1. The installer may ask for the default server; please consult your IT department



2. After installation, reboot the client machine.

Enable USB Redirection

Update the registry to enable the USB redirect feature by using regedit.

- Browse to the key

32bit versions of Windows: HKLM\Software\VMware, Inc.\VMware VDM\USB

64bit versions of Windows: HKLM\Software\Wow6432node\VMware, Inc.\VMware VDM\USB.

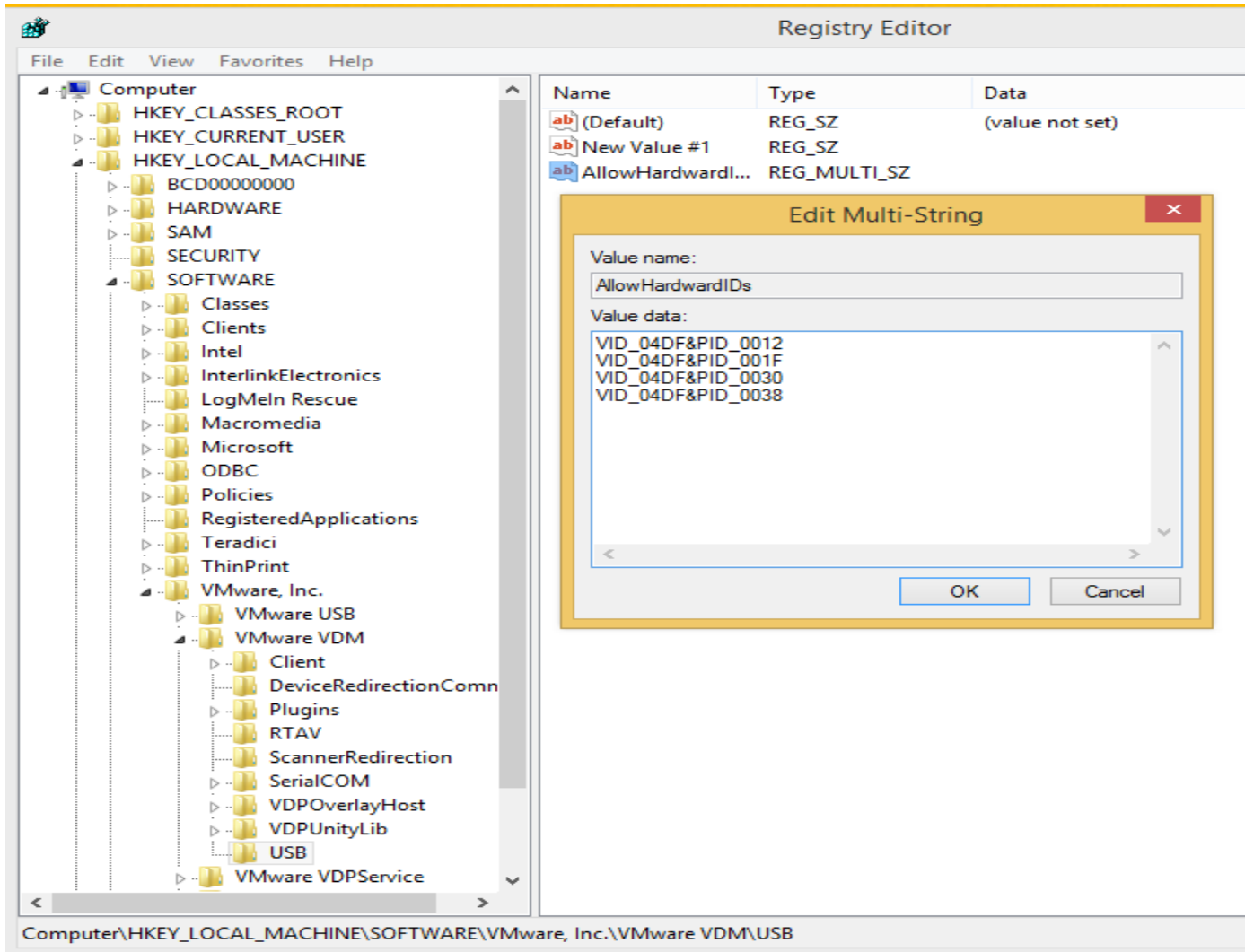
Note: If the key does not exist, you must create it.

- Create a new Multi-String value named AllowHardwareIDs if it does not already exist, and add the vendor and product ID value for the device to AllowHardwareIDs.

The following table shows ePadLink USB devices and their product IDs:

ePadLink device (Vendor ID: 04DF)	Product ID (PID)
ePadUSB	0012
ePadII	001F
ePad-ink	0030
ePad-vision	0038

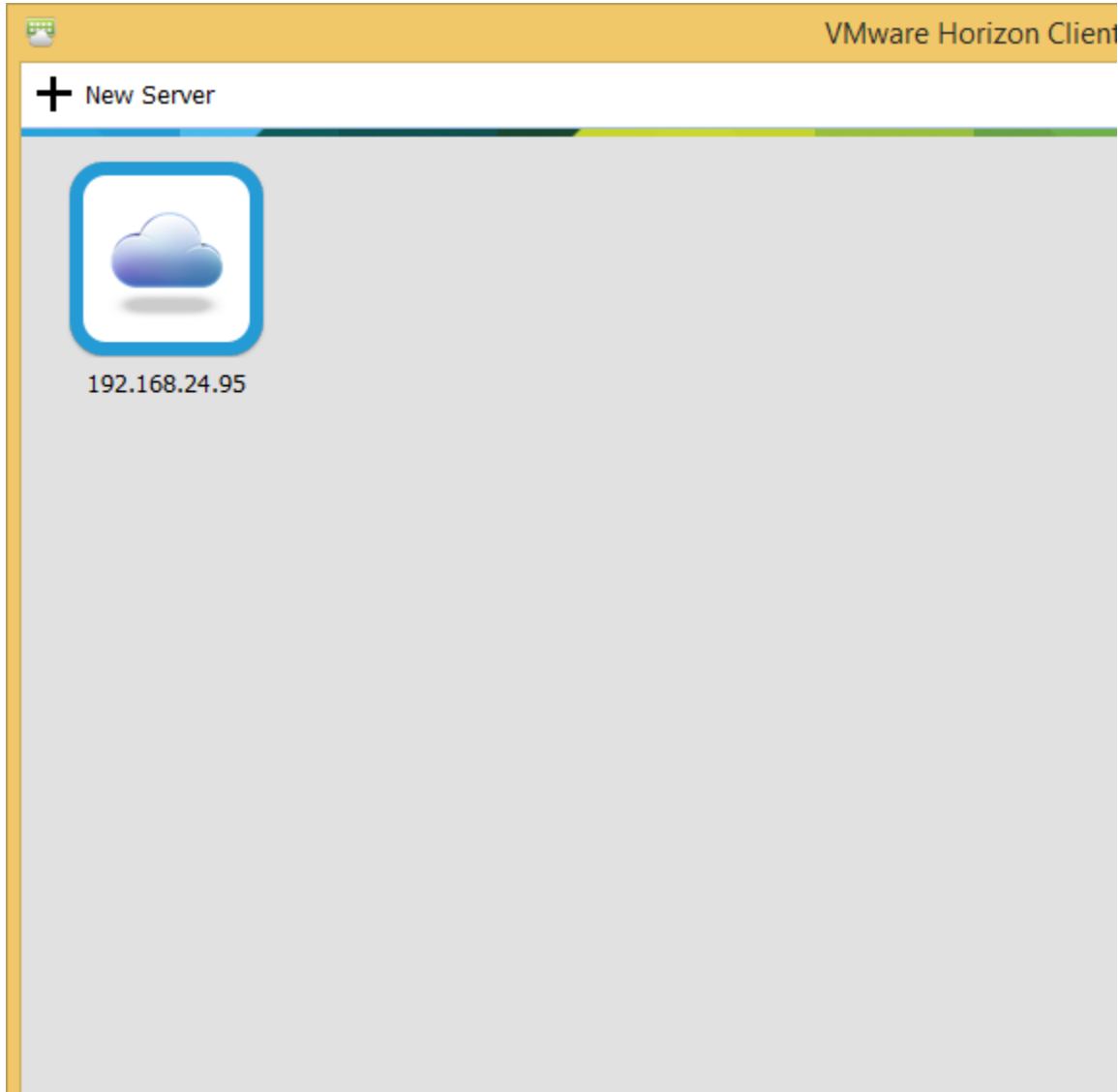
- The following diagram shows ePadLink devices appearing in the AllowHardwareIDs list in the registry.



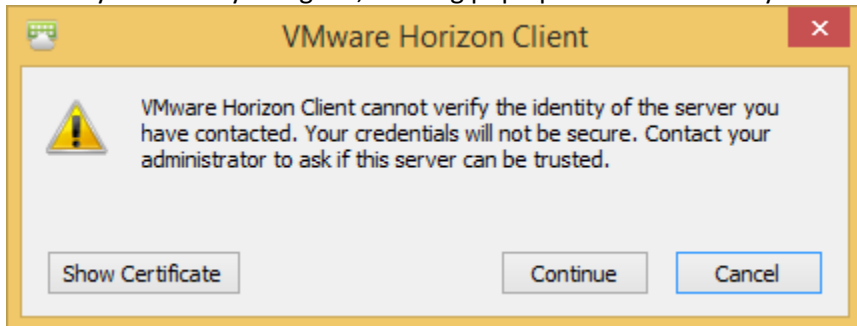
- Exit the registry program.

Connect the VMware View Server

1. Launch the VMware Horizon Client.
Double click on the icon with the Server IP address on it.

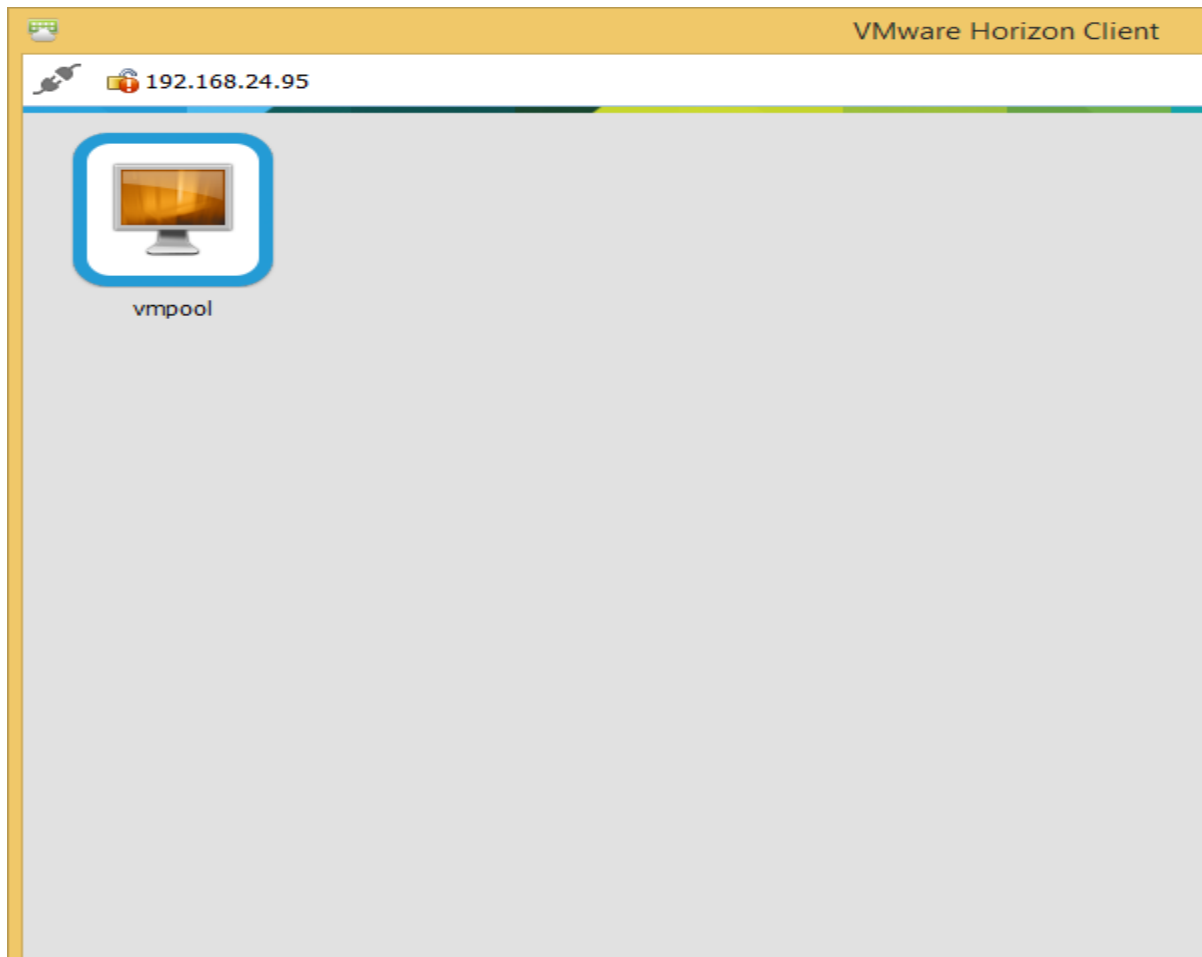


The very first time you sign in, a dialog pop up about the identity of the server appears; just click Continue.

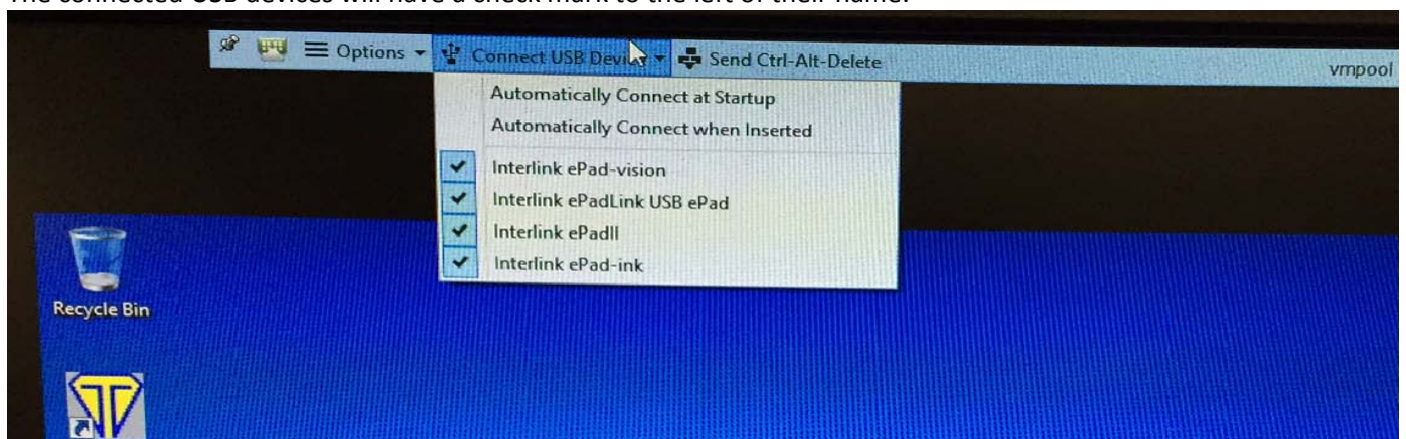


Enter the user name and password and the name of the domain.

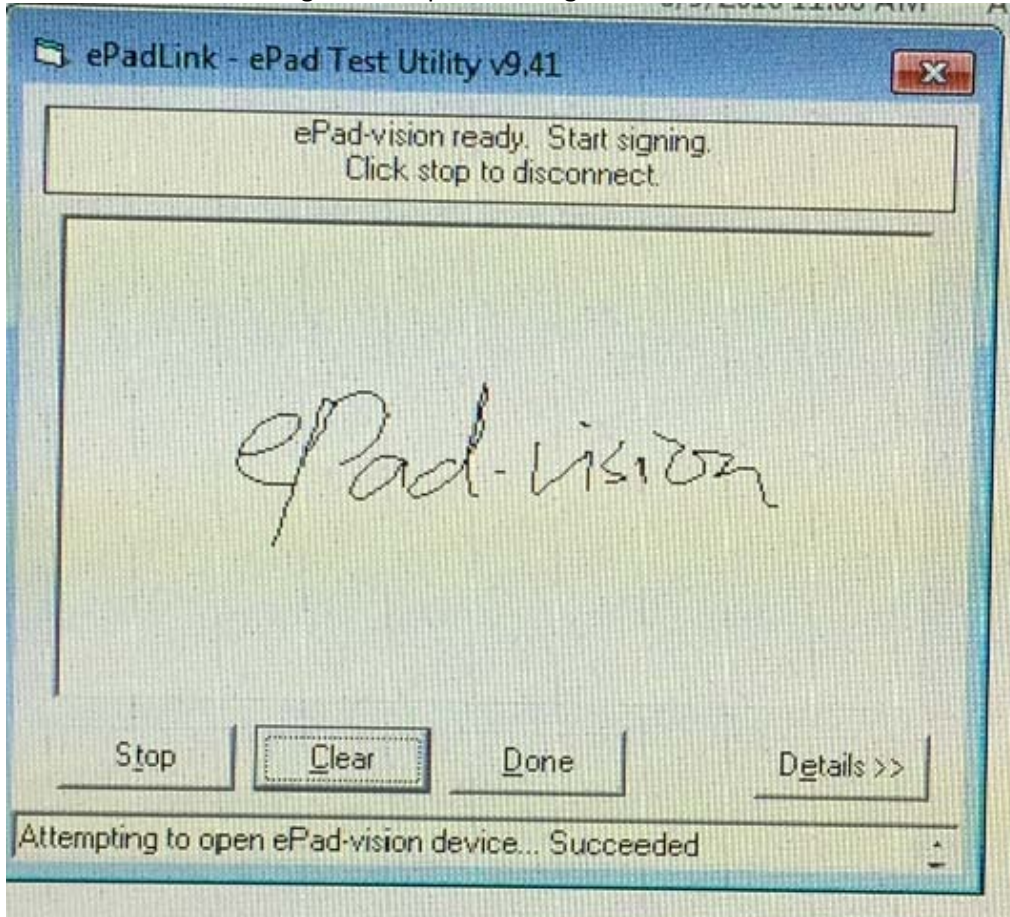
2. After login, select vmpool then right click on the icon select "Connect" option; the Virtual Desktop will start to load into your system.



3. At the top of the virtual desktop, click the "Connect USB Device" drop down list. It will show all the available USB devices on the client machine. Select the USB device(s) you want to use. The connected USB devices will have a check mark to the left of their name.



4. Use the Generic Test Program to capture the signature:



5. Log off when you have finished the session

